

ANNUAL REPORT

(2020-21)



REGIONAL REHABILITATION & RESEARCH CENTER (RRRC)

MM-24, Near ITI Chowk, Civil Township, Rourkela-769004,
Dist-Sundargarh, Odisha. PH-07735132405, Fax-0661-2664058
(Regd. Office: Plot No. 212/321, Near RGH, Rourkela-4, Odisha)
E-mail: rrrcodisha@gmail.com, Website : www.rrrcodisha.org

INTRODUCTION:

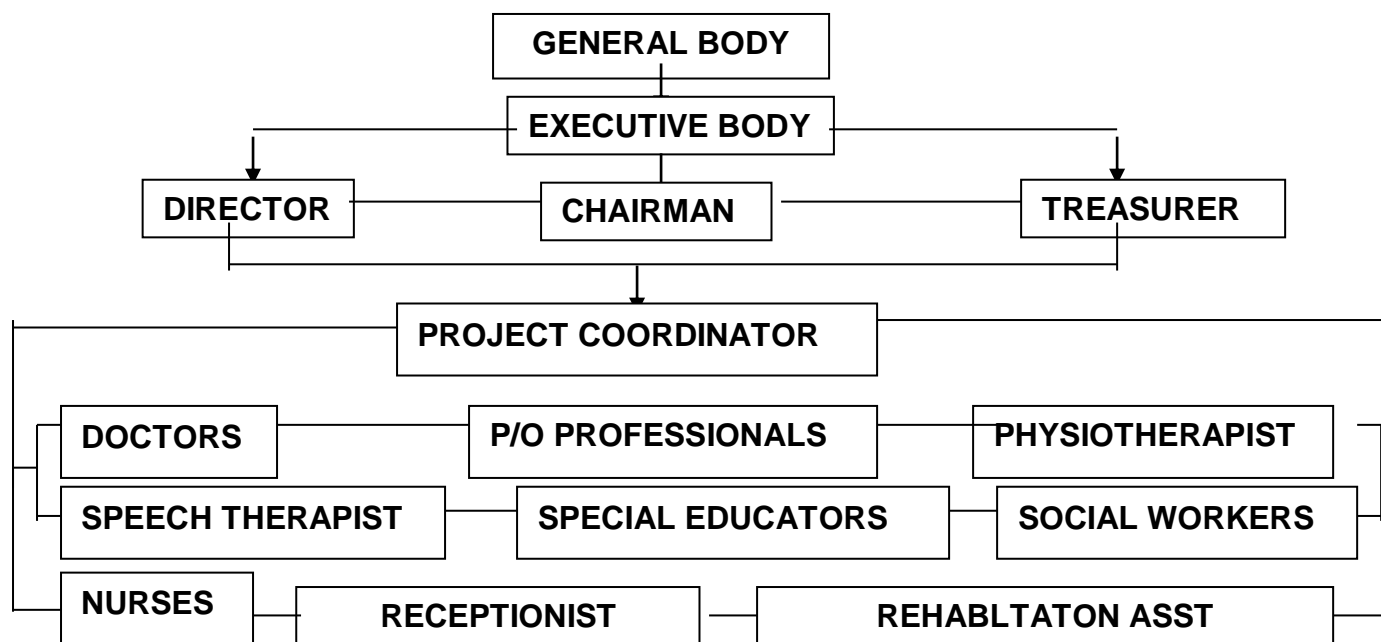
Regional Rehabilitation & Research Center (RRRC) is a State Level non-Profit NGO, which came into existence in 1993 with the purpose to serve the suffering masses particularly Persons with Disabilities, Women, Children and Aged in the community. The organization since its inception has been doing relentless campaign against socio-economical in-equalities of the people in the society where they are suffering from. It has been taking effective steps for rehabilitation of PWDs, empowerment of women, utilizing the full potentials of disadvantaged children and welfare of aged persons over the period of 18 years. The organization is the leading one supporting the cause and welfare of PWDs of tribal dominated Western Orissa, which is one of the most backward areas of our country.

The organization has been registered under the Societies Registration Act 1860 on 18-11-1997 and subsequently registered under FCRA in the year 2003 and presently functioning in a rented building situated in the heart of Rourkela town. The organization has necessary infrastructure and manpower to render the above services.

OBJECTIVES:

- ▶ To undertake identification and survey programmes for the PWDs.
- ▶ To engage in research and studies concerning problems and development of persons with disabilities.
- ▶ To provide professional services like special aids/appliances, special education, physiotherapy, speech therapy, psychotherapy, vocational training, etc to the person and children with disabilities.
- ▶ To undertake socio-economic activities for the PWDs.
- ▶ To act as a **RESOURCE CENTER** for the persons with disabilities.

STRUCTURE OF RRRC



ACTIVITIES AND ACHIEVEMENTS DURING 2020-21

1. IDENTIFICATION & ASSESSMENT OF PERSONS WITH DISABILITIES:

The organization identifies the disabled persons in two ways. In one method, the disabled come to the Head Quarter of organization and assessment done by the professionals. In another method, the organization organises identification-cum assessment camps in remote areas of various districts to have assessment of PWDs for their physical-social-economical rehabilitation. The details of disabled persons were identified during 2020-21 and their types of disability are given below in the table.



Place of Identification & Assessment	Types of PWDs Identified	Number	Total	Whole Total
At Head Quarter	Locomotor Disabled	122	317	1035
	Hearing Disabled	43		
	ID & Spastic	76		
	Visually Disabled	35		
	Others	41		
In Camps	Locomotor Disabled	321	718	
	Hearing Disabled	267		
	ID & Spastic	63		
	Visually Disabled	35		
	Others	32		

2. FITMENT & DISTRIBUTION OF ARTIFICIAL LIMBS & SPECIAL AIDS TO PWDs:

RRRC has a rehabilitation team comprising of Orthopaedic Specialist, Prosthetist/Orthotist, physiotherapist, special educator, social worker which examines PwDs and prescribes special aids required for them. The appliances are manufactured / fabricated in the workshop by trained professionals, and finally provided to PwDs at Head Quarter and by organizing camps with periodical evaluations.

The organization has also a six bedded Rehabilitation Ward to provide the boarding and lodging facilities to the disabled persons who requires short/long term days stay in the organization for fitment of aids/appliances.

The organization provides the following types of aids & appliances to prevent the impairment developing into disability, to simplify their daily living and to make them self supported in the communication

Types of Assistive devices provided to WDs:

*** Orthosis (supportive, preventive, correction**

- Lower limb Orthosis
- Spinal Orthosis
- Splints
- Orthopaedic shoes

*** Prosthesis**

- Lower limb prosthesis
- Upper limb prosthesis

*** Rehabilitation & Mobility Aids**

- Auxiliary crutch
- Elbow crutch
- Tricycle
- Wheel chair

*** Hearing Aids**

*** Educational Equipments**

***Special Furniture**



Different types of special aids distributed/fitted to the PWDs at Head Quarter and Camps 2020-21 are mentioned below in the table;

Mode of Fitment	Types of aids given	No. of beneficiary	Total	Whole Total
At Head Quarter	Prosthetic Aids	31	154	704
	Orthotic Aids	12		
	Mobility Aids	56		
	Hearing Aids	18		
	Others	37		
In Camps	Prosthetic Aids	91	550	
	Orthotic Aids	23		
	Mobility Aids	152		
	Hearing Aids	212		
	Others	72		

3. RESIDENTIAL SCHOOL FOR CHILDREN WITH INTELLECTUAL DISABILITY (ID):

The organisation with financial support from DDA, MSJ&E, Govt. of India is running a Residential School for children with ID at MIG-210, Phase-III Chhend, Rourkela since 2006. The school is running with support from Ministry of Social Justice & Empowerment, Govt. of India and the strength of school is 49 (29 residential and 20 day scholar). Services like special education, early assessment & prevention, physiotherapy, speech therapy, behaviour management, parental counseling, etc are provided to Mentally Retarded Children on free of cost with free hostel facility.



The performance and achievements of the school during 2019-20 is as follows;

Description	During previous year	Up to end of year 2019-20
Total No. of Beneficiaries	59	49
Those passed out of institution successfully	12	08
Promoted to next grade in the same organization	32	28
Pursuing further studies/ care in other organization	23	21
No. of dropouts	6	4

4. SPECIAL SCHOOL FOR SPASTIC CHILDREN:

RRRC is running a Special School for Spastic (Cerebral Palsy) children at HIG-B-202, Phase-III, Chhend Colony, Rourkela since 2001-02. Special education, training, physiotherapy, speech therapy, home bound programme, early intervention, parents counseling, etc are being provided in the school on free of cost.

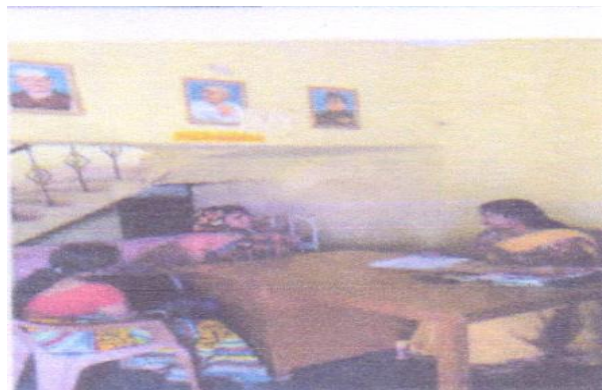
The school is running with financial support from Ministry of Social Justice & Empowerment, Govt. of India and strength of school is 46 (Day scholars)



Teaching to spastic children in process

5. Half Way Home for Mentally ill Persons:

The organization is a Halfway Home for Mentally ill Persons since 2014-15 to provide treatment, psycho therapy, physiotherapy, counseling services with objectives o re-integrate and rehabilitate them in the family and community so that they can be productive members of the society. Presently 15 mentally ill persons are getting services from the home.



6. Therapeutic, Rehabilitation, Care and Programme for Persons with ID and Spasticity:

The organization is implementing Therapeutic, Rehabilitation, Care and Programme for Persons with ID and Spasticity with the support of SSEPD Department, Govt. of Odisha since 2017-18. Services like early disability assessment, intervention programme, special education, home based intervention, parent counseling, community programmes, vocational training, etc for of the main streaming of persons with ID and Spasticity in the community.



7. Physiotherapy Center for Senior Citizens.

Regional Rehabilitation & Research Center (RRRC) a leading NGO for PwDs and senior citizens is running a Physiotherapy Clinic for Senior Citizens at Rourkela since 2019 and providing services identification and screening of senior citizens with health problems like lumbar & cervical spondylitis, osteo-arthritis, sciatica, muscle weakness, hemiplegia, paraplegia, post operative cases, nerve weakness, facial muscle paralysis, etc, physiotherapy treatment of above health problems like sciatica, Spondylitis, paralysis, frozen shoulder, osteoarthritis, etc. Average 50-60 senior citizens of Rourkela and nearby areas per month are covered by the Center.



8. NCLP Child Labour Training Center:

The organization is running 3 NCLP Child Labour Training Center with average 20 students in each center at Bandamunda, Madhusudan Pally & Panposh of Rourkela. Students are offered formal education from class I to IV through bridge course mode in two years and after completion of education, they are admitted in normal schools. Similarly grown up students are given vocational training in local demanding trades so that they would be capable for earning their livelihood after training.

9. SINGLE WINDOW DISABILITY CELL (DC) AT ROURKELA:

A unique project "Disability Cell", the brain child of RRRC was inaugurated on the occasion of Panchayatiraj Divas on 5/3/10. The services like **disability certificate, train pass, bus pass, pension, aids/appliances, vocational assessment etc** are being provided to the disabled on SINGLE WINDOW system in collaboration with Health, Revenue, Social welfare, Transport, Education departments. During 2019-20 the following services have been provided to the disabled through Single Window System.

S. No.	Type of Service	No. of Beneficiaries
1	Disability Certificate	388
2	Train Pass	322
4	Aids/Appliance	138
5	Residential Certificate	18
6	Income Certificate	54
7	Vocational Guidance	18
7	Processing of application for loan for self-employment	33

10. CULTURAL PROGRAMMES & OBSERVATIONS:

a) Observation of International Day for the Disabled.

RRRC like every year, this year has also observed International Day for the Disabled on 3rd December 2020. On the occasion, a rally of disabled, students, parents was organized which starting from DAV Chowk and covering ring of city has culminated at RRRC premises, Chhend, where a public function was held. Free distribution of aids/appliances, prize distribution, cultural shows were organized in the function.

b) RRRC has been observing important days like Independence Day, National CP & MR Day every year with public participati



Gist of Activities of Organisation for National Trust Category of Disabilities-2020-21

S. No.	Name of Project/ Activity	Age group	Type services/activities	Number of beneficiaries (Category wise)		Total
1	Disha-Cum-Vikash Center of National Trust	Below 20 yrs	Special Education, Early Intervention, Physiotherapy, Speech Therapy, Skill Training, Parental counseling, etc	ID*	18	30
				CP	7	
				Autism	5	
2	Special School for ID	Below 18 yrs	Special Education, Early Intervention, Physiotherapy, Speech Therapy, Home Bound Programme, health check up & treatment, Parental counseling, etc	ID	50	49
3	Center for Spastic Children	Below 18 yrs	Special Education, Early Intervention, Physiotherapy, Speech Therapy, Home Bound Programme, health check up & treatment, Parental counseling, etc	CP/ Spastic	46	46
4	Therapeutic & Rehabilitation Center for PwDs	All age group	Diagnostic assessment, physiotherapy, occupational therapy, speech therapy, behavior therapy, Early Intervention, Skill Training, Marketing of vocational products, home bound programme, yoga & pranayam, referral & follow up, etc	ID	28	70
				CP	18	
				Autism	11	
				Others	13	



**Director
RRRC, Rourkela**

REHABILITATION
811 001 (RRRC)
1994-2014