

**Annual report  
2018-2019**



**RIDDHI SOCIETY FOR REMEDIAL & INTEGRATED EDUCATION**

**27, PURNA MITRA PLACE, KOLKATA – 33**

## Contents.....

1) List of Governing Body Members .....	3
2) Organizational Background .....	4
3) Socio demographic and Geographic Context .....	4
4) Missions & Objectives .....	5
5) From the Secretary's Desk .....	6
6) Organization Chart .....	7
7) Strengths, Resources & Extended Services .....	8
8) Therapeutic & Special Education Unit .....	9
9) Vocational Training Unit .....	10
10) Physical Training .....	12
11) Training for Social Development .....	12
12) Psychology Unit .....	13
13) Speech & Language .....	13
14) Annual Cultural Programme .....	13
15) Seminar & Workshop .....	13
16) SRV Policies, Approaches & Services.....	14
17) Impact on Community .....	14
18) Programme Sustainability .....	14
19) Rehabilitation .....	15
20) Beating the Odds .....	15
21) Our Supporters .....	16
22) Categorical Charts of Beneficiaries & Services Provided .....	17
23) Graphical Representations .....	18 & 19

**LIST OF GOVERNING BODY MEMBERS.**

**2017 - 18**

<b>Vice Admiral (Retd) Bimalendu Guha</b>	CL 199, Sector 2, Salt Lake, Kolkata 700 064.	<b>President.</b>
<b>Smt. Gopa Ghosh</b>	27, Purna Mitra Place, Kolkata 700 033.	<b>Secretary.</b>
<b>Col. (Retd) Nirupam Basu</b>	21K, Prince Bakhtiar Shah Road, Swiss Castle, Flat No. 2C, Kolkata 700 033.	<b>Administrator</b>
<b>Smt. Swati De</b>	23A, Nakuleshwar Bhattacharya Road, Kolkata 700 026.	<b>Member.</b>
<b>Smt. Suvra Sinha Roy</b>	5, Iswar Chowdhury Road, Kolkata 700 029.	<b>Member.</b>
<b>Dr. Uttam Sinha Roy</b>	5, Iswar Chowdhury Road, Kolkata 700 029.	<b>Member.</b>
<b>Sri Asoke Datta</b>	48/57A, Swiss Park, Kolkata 700 033.	<b>Member.</b>

**OUR BANKERS**

**State Bank Of India, Kolkata  
Branch: Charu Market**

**OUR AUDITOR**

**K. C. Roy & Co  
Address: 69 A, Pratapaditya Road  
Kolkata – 700026**

## **Organizational Background**

The school is run by a registered society named, "Riddhi Society for Remedial and Integrated Education". The society has been registered with the office of commissioner (for persons with disabilities), Government of West Bengal.

It has also been registered under the West Bengal Societies Registration Act, 1961. Furthermore to provide tax relief to donor to the school it has obtained Income Tax Exemption Certificates under Section 80G of the Act.

From the initial small unit with 23 children and 4 teachers we are now self sufficient to provide training to 65 students and 38 staff (26 teaching staff + 11 non-teaching staff). More than that is restricted because of lack of space.

Riddhi now stand as one of the most experienced and oldest special schools in Kolkata providing a caring hand to the adolescents and children with various disabilities to help them to grow, learn and succeed. Riddhi had a small beginning in April 1999 with 23 children. These children were either in early stimulation stage or in pre-primary level. From the year 2000, primary section started education for educable group. By 2003 academic year the school had advanced up to class IV.

Every year children with various handicaps and special needs are integrated among themselves as well as with normal children in the primary level by being trained together. In 2002, two children with special needs were admitted in normal high school.

Riddhi started a speech and language unit from 2000. From 2001 vocational subjects such as computer education, typing in addition to regular classes of crafts was started. Children in craft classes learn to make decorative paper items like paper chains, wall hangings, masks, envelopes and greeting cards. Girls are taught needlework.

## **Socio Demographic & Geographic Context**

Riddhi is the premier provider of education and training to special children in Eastern India. More and more children from different socio-economic background are referred to Riddhi from. Children with multiple disabilities are taking admission in Riddhi, referred by various physiotherapy clinics, nursing homes and other similar institutions in the city.

We are based in Kolkata and get students from around 50 km vicinity. We also get students from remote Eastern India, Bangladesh, Nepal.

## **Missions and Objective**

Our primary objective is to make the children as self reliant as possible so that they may face the challenges of day to day life in different spheres of life. Our aim is also to help the children utilize their time, special abilities and leisure in a productive way.

All the beneficiaries are provided a scope to develop in various areas of learning. To attain our objectives in working with children with special needs, we need to develop our infrastructure. We need to find different methods and materials. Every disabled child is different in his struggle to overcome developmental hurdles. In Riddhi, we believe in innovation and awareness of the latest scientific developments to provide such children with the best interventional support. With our services we try to offer people with various and multiple disabilities the opportunity to realize their own potentials and provide much needed support to their family members and caregivers. To provide the best is our vision.

## From the Secretary's Desk



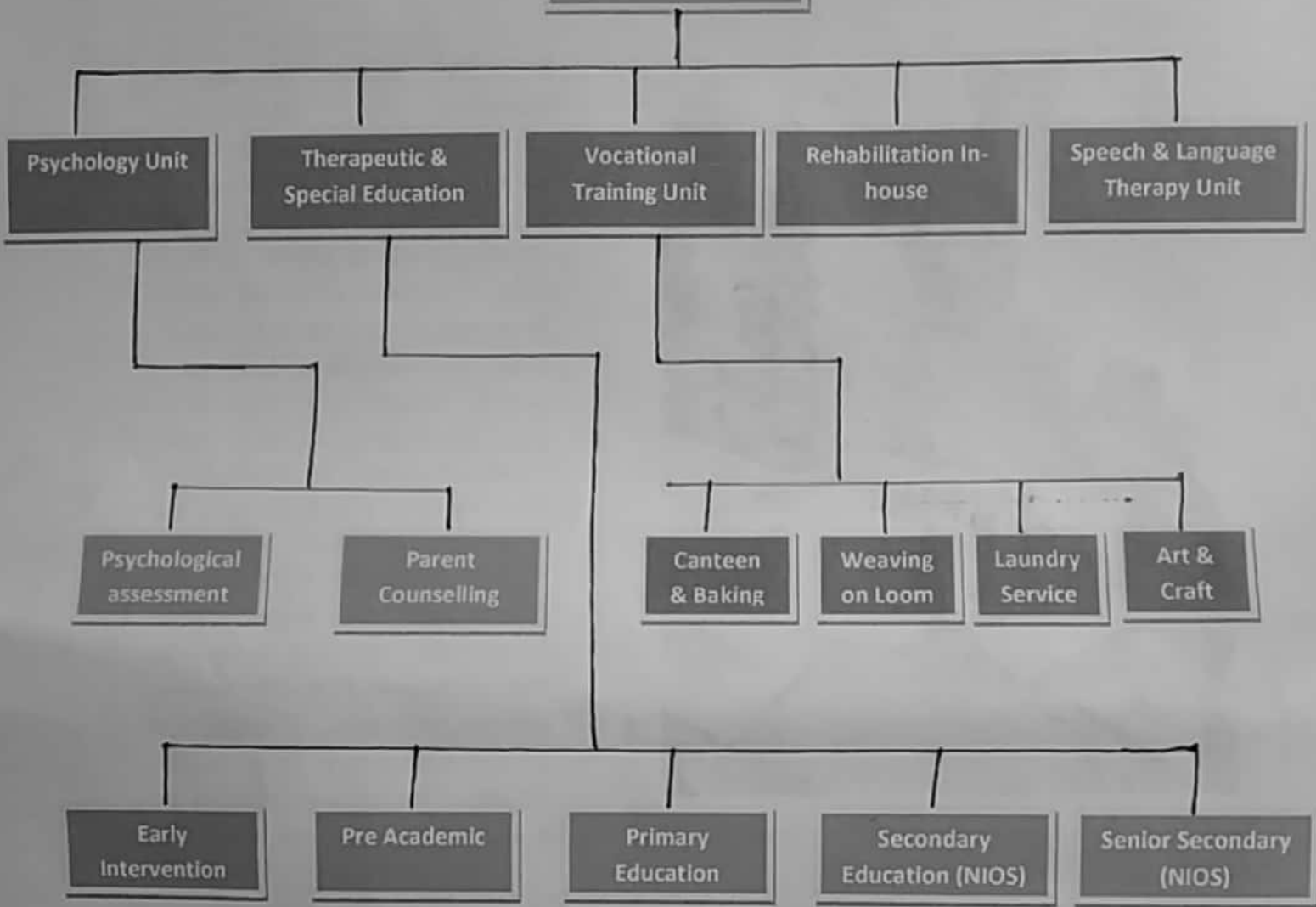
any more from our present rented accommodation. To try for a building of our own is our next target.

It is my immense pleasure to announce that Riddhi has completed 19 successful years. Our untiring efforts for the students' around development have started showing positive results in their lives. A number of young adults have been trained for inclusion in mainstream population. After many years's training here they have gone for training in other adult vocational centers. We are happy to know that a few of them have got placement in various enterprises. Number of students has decrease a little as many more special schools have started operating in the area. But we believe in quality training and not on number of students. A great challenge to us is our paucity of space. We are unable to spread

GOPA GHOSH

Founder & Secretary  
11<sup>th</sup> April, 2019

Organization Chart



## Strengths Team of Riddhi

- Neuro Physiological Curative Pedagogist
- Rehab Psychologist
- Special Educators
- Psychologists
- Montessorian
- Vocational Trainers
- Computer Teachers
- Yoga teachers
- Dance teachers
- Music teacher
- Art & Craft teacher
- Caregivers

## Resources

- Indian Standardized Testing Materials for Psychometry
- Montessori Materials (Exercise of Practical life, Sensorial Material, Language development materials, Arithmetic Materials, Materials for cognitive development)  
Riddhi Study Materials (Explained later)
- Set up of the Loom in Weaving Unit
- Large & small appliances & utensils in Vocational Unit

## Extended services

- Early Intervention (Psychological Assessment & Parents Counselling, Neuro Physiological Curative Pedagogy, Speech & Language Training.
- Montessori 1 & 2 (Pre primary Education, Self advocacy)
- Primary Education
- Secondary Education (Preparing for class X boards through NIOS)
- Vocational Training - Both for class X level and only vocational training)
- Rehabilitation – Mainly in our organization (At present we have not tagged up with any other organization)



# THERAPUTIC & SPECIAL EDUCATIOON UNIT

## 1. Early Intervention (Carried out daily following a structured routine)

Children from the age group of 3+ to 8+

**Disability Categories: Autism, ID, Multiple Disabilities**

Activities done for training in various areas like cognitive, reducing ADHD, increase concentration, develop motor skills and self help skills, Social development.

- i) **Preliminary Activities:** Threading Beads, Sorting, Pairing pictures, Placing, Inserting pellets, Simple puzzles etc.
- ii) **Exercises of Practical Life:** Folding, Rolling, Mopping, Sweeping, Pounding, Making Chandan Pest, Rolling Chapaties, Closing & Opening buttons, Fastening buckles, Tying Shoe laces and bows, Polishing Brass objects and shoes, offering and accepting things, pouring (liquid and grains), Cutting vegetables
- iii) **Sensorial Activities:**
  - a) Materials dealing with dimension (Big and small, Thick and thin, Long and short): Cylinder blocks, Pink tower, Brown stair, Long stair and Coloured cylinder
  - b) Material dealing with Chromatic Sense (Basic colours, All colours, Colour gradations): Colour Tablet
  - c) Materials dealing with Tactile sense: Touch board and Touch Tablet
  - d) Materials dealing with Baric Sense (Heavy & Light): Baric Tablet
  - e) Materials dealing with Acoustic Sense (Loud & Soft sound): Noise Box
  - f) Materials dealing with Geometrical shapes: Geometrical insets, Cards and Solids
- iv) **Activities for Language Development:** Extensive work on a daily basis giving the names of common objects, animals, birds, flowers, parts of the body, fruits and vegetables, transport, environmental exposure through pictures, audio-visuals, listening to stories, action songs and recitation for the development of receptive as well as expressive language.



## 2. Pre academic:

- a) Colouring pictures: to develop pincer grip, eye-hand coordination
- b) Introduction to English alphabets (Capital & small)
- c) Introduce phonetics
- d) Arithmetic: Introduction to numbers using number rods, learning to count fixed and loose quantities.
- e) Pre writing: Drawing lines and patterns using books prepared by Riddhi

### 3. **Formal Academics** (A time table is formulated for each class for the whole year)

Children from the age group of 10+ to 22+

**Disability Categories: Autism, Mild ID, Slow learners, Multiple Disabilities**



Various subjects like English, Bengali/Hindi, Basic Mathematics, General Knowledge, and Use of Computers are taught using books developed by Riddhi.

As children progress, ultimately prepare them for secondary and senior secondary both through NIOS. Various other subjects introduced at the secondary levels are Home Science, Social Science, Art, Computer Application and Baking & Confectionery (A vocational subject).

In current (2016-17) one student Suvam Bhattacharya cleared all the academic subjects at the secondary level.

## **VOCATIONAL TRAINING UNIT**

### 1. **Pre Vocational Training** (A weekly activity)

Children from the age group of 12+ to 17+

**Disability Categories: Autism, ID, Multiple Disabilities**

As soon as children reach the age of 12, along with academics, pre vocational training is given. Various activities are:

- Recognition of ingredients & Equipments
- Learning to use Piller, Knives, Greater
- Learning the test of various spices
- Washing hands
- Washing ingredients
- Maintain personal hygiene
- Putting back things
- Cleaning the work area

## 2. Vocational Training (A weekly activity)

Children from the age of 18+

**Disability Categories: Autism, ID, Multiple Disabilities**

### a) Canteen Service

Various activities they do required for cooking – Washing vegetables and utensils, Pilling, Chopping, Cutting, Grating, Kneading, rolling, weighing.

#### **Items prepared in the canteen service:**

1. Dhokla
2. Grilled Sandwiches
3. Various Purie and Parathas
4. Sabjis
5. Upma
6. Chilla
7. Papri chat
8. Pao bhaji
9. Chowmin
10. Pasta
11. Milk shakes and Sarbats



### b) Baking Service

Activities they do like weighing, mixing, creaming, greasing, rolling, cutting, pouring, packing, sealing. Various items prepared are: Cakes and cookies and savoury items like cheese straw, pizzas, and pies

### c) Laundry Service

Activities like sorting clothes, removing stains, washing in the machine using detergent, drying clothes, ironing and folding are done.

### d) Weaving on loom

Children have started weaving on the loom and making products like kitchen towels, table mats etc.



e) **Art & Craft**

Making paper bags, carry bags, making bead necklaces, fabric painting, tie & dye, different handicraft items, embroider bags etc.

## Physical Training

All children participate

Disability Categories: Autism, ID, Multiple Disabilities

- a) Yoga Training thrice a week
- b) Games once a week
- c) Riddhi Annual sports was held on 23<sup>rd</sup> December, 2018 at Sambaran Banerjee Cricket Academy, Vivekananda Park, Kolkata



## Training for Social Development

Disability Categories: Autism, ID, Multiple Disabilities

- a) **Community Lunch & Tiffin (Once a week)**

Once a week tiffin and lunch are prepared in school and served to the children so that they learn to eat everything, wait their turn and learn to serve and clean utensils.



- b) **Riddhi Annual Picnic was held on 12<sup>th</sup> January, 2019 at Baruipur**

All the students along with their parents and siblings and full Riddhi team participated and enjoyed for whole day.

## PSYCHOLOGY UNIT

### Disability Categories: Autism, ID, Multiple Disabilities

This is a need based intervention and our psychologist intervene according to therapists it is needed. Sensory training is very helpful especially in the case of autistic children as they have specific sensory motor deficits.

## SPEECH & LANGUAGE UNIT

Children with communication and language deficits are given special therapies to improve their communicative skills both verbal and non verbal. Articulation problems are also dealt with.



## RIDDHI ANNUAL CULTURAL PROGRAMME



Annual Cultural Programme was held on 23<sup>rd</sup> February, 2019 at 'Children's Little Theatre', Aban Mahal Hall. 22<sup>nd</sup> February we had the stage rehearsal. Along with various songs and dances, 'Sholay' was staged by our students and it was a huge success.



## SEMINAR & WORKSHOP

A one day Workshop was held on 24<sup>th</sup> August, 2018 at Rotary Sadan (S. S. Hall), Kolkata



A workshop held in collaboration with CINI to learn about Child Protection Policies. A great learning experience for all the staff of Riddhi

## SRV Policies, Approaches & Services

- Identifying the ability of child
- Identifying the Socio Economic background for further rehabilitation
- Training the children in different field
- Training for independent movement in city using public transport.
- Giving scope for small assignments to earn
- **Appointment of 5 students** as assistants in different department of our organization like (Assistant Dance Teacher, Office Assistant, Assistant in Canteen service, Assistant in Baking & Canteen, Assistant in Laundry Service, Assistant in father's Theatre Supply Business)
- Participated in **Rojgar Mela** organized by the Govt. of West Bengal
- In future tie up with NIEPIED & National Career Service Centre for Differently Abled, Kolkata

### Impact on Community

Community → Family → Productive & useful  
member of Society

Helping in economic  
growth of the community  
Helping in growth of  
small scale industries  
like weaving, block  
printing, packaging  
spices

## PROGRAMME SUSTAINABILITY

Riddhi is running very well for the past 19 years. Before getting financial help from THF we sustained with sheer determination and hard work.

Riddhi's partnership with THF has an immense impact. For last 7 years THF has supported us financially to make the programmes mainly a great success.

This **noticeable growth within 19 years** proved Riddhi's capabilities to handle a growing amount of work, and its **potential to develop** in order to **accommodate all future needs**.

## REHABILITATION

### Sk. Md. Muneebur Rahman

A 28 year old Intellectually Impaired Young Adult. He is in Riddhi since April 2001. Multichannel intervention has been done for his all round development. He has cleared secondary level training in Baking & Confectionery.

**Strengths:** A very good athlete and sports person; won medals in Special Olympics for 100 mtrs and 200 mtrs run. He was National Champion 'Special Olympic' Bharat in Table Tennis. Attended various T. T. Camps organised by Special Olympics.

His passion for T.T. has been augmented by Riddhi and arrangements for his further training have been made in a local club 'Baisakhi Sangha'. Riddhi makes the payment required for his training.

He is also a good worker in Riddhi's canteen unit. He has been absolved in Riddhi as assistant in Vocational Unit where he manages the canteen as well as Baking & Confectionery Unit.



## BEATING THE ODDS

### Arko Dhar

Arko is a young adult with intellectual impairment, physical deficits and some visual impairment. He is in Riddhi since August, 2003. Interventions have been done in the areas of cognitive development, pre vocational and Vocational training, and physical training for better co-ordination of movement.

**Strengths:** A very good singer, good worker in the vocational unit; especially good at laundry service i.e. washing, drying & ironing cloths, packing & putting them away.

His training in the laundry service project has helped him immensely for his future rehabilitation. His father owns a theatre supply business. Arko at present works part-time for his father. When there are theatre productions, he arranges clothes and props and after the show he collects clothes, counts them, folds and put them back. He also earns money on a per-day basis. A success story for Riddhi!



## **OUR SUPPORTERS...**

The HANS Foundation, New Delhi

Directorate of Social Welfare, Govt. of West Bengal

Commissioner Disability, West Bengal

NIMHANS, Bangalore

CMC, Vellore

Indian Institute of Cerebral Palsy, Kolkata

Ministry of Social Justice & Empowerment

University of Calcutta, Dept. of Psychology

National Institute for the Empowerment of Persons with Intellectual Disabilities (Divyangjan)

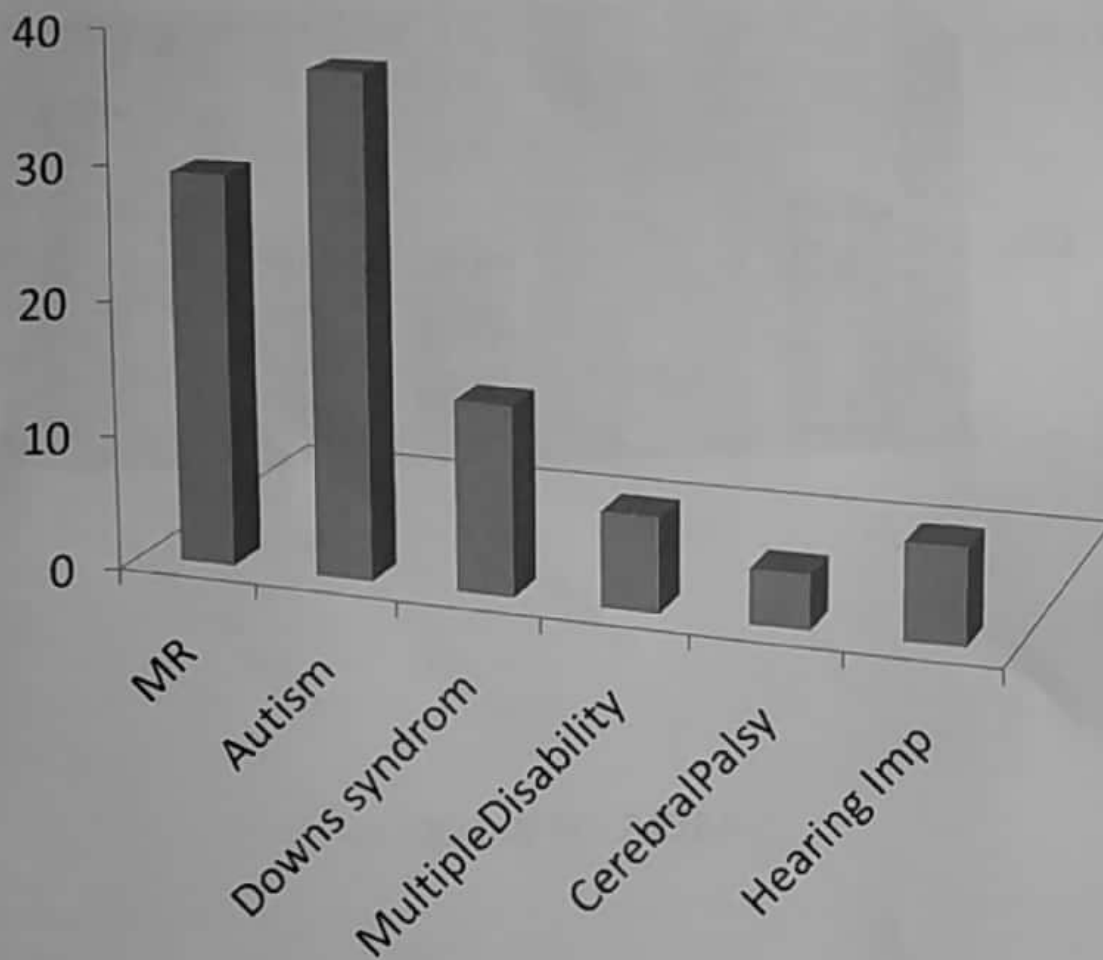
Charu Market Police Station, Kolkata



**No of Beneficiaries (According to Disability Category) Getting Services Provided by Riddhi**

SERVICES ↓	AUTISM	CEREBRAL PALSY	MENTAL RETARDATION	MULTIPLE DISABILITY	HEARING IMPAIRED	AUTISM SPECTRAM DISORDER
EARLY INTERVENTION	8	×	3	3	×	×
PRE ACADEMIC	8	×	3	×	1	2
ACADEMIC	6	1	26	×	3	×
PRE VOCATIONAL	5	×	5	×	×	1
CANTEEN	3	1	22	×	×	×
BAKING	2	1	13	×	3	×
LAUNDRY	3	1	14	×	2	×
WEAVING LOOM	3	1	14	×	2	×
COMMUNITY TIFFIN	10	1	17	1	1	×
COMMUNITY LUNCH	4	1	25	×	2	×

## Categorical Percentage of Beneficiaries



**GRAPHICAL PRESENTATION OF TRANSFORMATIVE IMPACT ON THE DIRECT BENEFICIARIES (65 BENEFICIARIES)**

