

2018 ANNUAL REPORT



Bannu Arogyada Seva Society



OUR MISSION AND VALUES

“Improve the health and education of those we serve”.

MISSION

To bring hope, opportunity, and lasting impact on underserved communities. Building long-lasting solutions that ensure healthcare access and special education is reachable for those who need it.

VISION

To ensure that our communities have the educational and health support, employment opportunities, and encouraging environment that allows them to reach their full potential. Empowering people today to create a better place for tomorrow.

GRATITUDE

We seek to plant in each project the seeds of appreciation among our people.

WELLNESS

Every time we attend to someone, we seek their health, as well as the health of their loved ones.

FAMILY

We promote family values through the involvement of all people close to our students.

AWARENESS

Each member of our family should be able to raise awareness among the public at large.

VITALITY

In the end, we want everyone to get the idea that they still have a reason to fight.



ABOUT BANNU

Bannu is more than a name given to honor the devoted mother of Doctor Charanjit Reddy. Bannu is health, education, and a commitment to our core values reflected in every assignment our members undertake. With all activities, programs, and projects, Bannu strives for a more devoted and committed community. This begins with the individual. So with each patient attended, each child educated, we move forward to achieving our collective dream.

Message from the President

“With each passing year, a new challenge begins for us. We have been able to continue changing our people in different fields since 2014. The road has not been easy, some programs have stopped, others have begun, but I want to make it clear to our colleagues, workers, collaborators, and anyone who is involved with the Bannu organization’s activities, we have no intention of ending this journey.

The dream, values and our conviction are more significant than any inconvenience that comes our way. My devout mother knew how to leave me a healthy heart to continue with my dreams, and to have a mind that transcends other people.

The country continues to have deficits in its health and education systems. The gap between the living conditions of the people is huge. Faced with these hardships,, Bannu will continue providing each day with more passion in the service of this beautiful community.”



BANNU AROGYADA SEVA SOCIETY

Bannu's organization sustain his mission by working in different projects, which are connected but individually managed.
Meet our projects:

**BANNU NEURO
HEALTH
INSTITUTE**



**BANNU CHARITABLE
HOSPITAL IN A TRIBAL
FOREST AREA**



**CLINICAL ROTATION FOR
MEDICAL STUDENTS/
MEDICAL VOLUNTEERS**



**BANNU HEALTH
CAMPS & MOBILE
CLINICS**



**INTERNATIONAL
VOLUNTEER SHIP
PROGRAM**



**MEDICAL SUPPLIES
AND EQUIPMENT
PROGRAM**



**COMMUNITY HEALTH
AWARENESS
PROGRAMS**





BANNU NEURO HEALTH INSTITUTE



We are developing Self-sufficient students.

Bhannu
NEUROHEALTH AND
REHABILITATION CENTER
changing the face of neurological impairment



Behind NIT campus ,
Warangal Telangana
India

Mental disabilities constitute one-sixth of all health-related disorders. India accounts for nearly 15% of the global psychiatric, neurological, and substance abuse disorder burden. We believe that anyone with the right tools may learn to become self-sufficient. Bannu will provide the environment to accomplish this. Not only are we addressing the problem of intellectual disabilities, Bannu is doing so in impoverished regions.

Bannu Neuro health provides special education by qualified teachers with bachelor's and master's degrees in special education, speech therapy, physiotherapy, occupational therapy, behavioral therapy by a psychologist. In addition, we have expanded to include vocational and rehabilitation training for skill development and self-employment

SCHOOL SERVICES

Inside our facilities, there is a qualified staff team which help our students with different type of services, providing standard education and quality accompaniment. Meet our services:

- **Speech & behavioral therapy**
- **Computer lab**
- **Agri-Farming**
- **Free door to door transportation**
- **Security Cameras**
- **Physiotherapy & sensory park**

Following rigorous standardized testing, students are placed into the following programs based on age and individual cognitive abilities:

- Early Intervention Program
- Pre-primary and Primary Group
- Secondary and Prevocational group
- Post-Secondary/Vocational Group

A deeper look into the 2018 enrollment

125 Students enrolled

3
Early-Intervention
program

22
Pre-primary

31
Primary group

25
Secondary

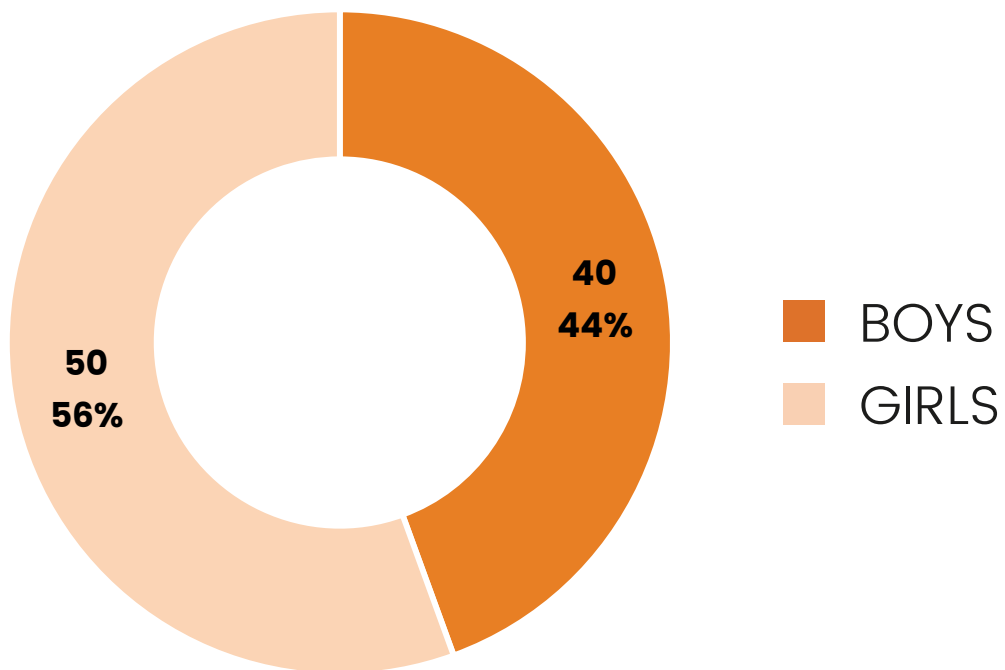
29
Prevocational
group

15
Post-Secondary /
Vocational group



We divided our students into different class levels from the onset of the school calendar. The groups with the highest number of students are Primary and Pre-vocational. This past year our largest number of students have graduated to our higher-level programs. Now, Bannu has more educated students in the Secondary and Prevocational groups compared to last year's enrollment report. This notice means we are taking a step forward in our goal of developing self-sufficient students every day. We remind you that our students do not receive an ordinary school education, they are prepared to lead with their conditions and inspire others to improve their lives through hard work and dedication.

We manage a balanced group within the institute, with a higher percentage in terms of men who are only five more than women forming within our facilities.



Individuals with intellectual disabilities are not afforded the same opportunities as people without disabilities. Research shows that there are 31 million people with intellectual disabilities in India. 35.29% of all people living with disabilities are children. Facing this problem, the institute shows a significant impact on these students. The highest disability rate for our students is in Autism. With a highly educated, multi-disciplinary team, we have addressed the following diagnoses within the field of Special Education.:

Autism	35
Cerebral Palsy	17
Multiple Disabilities	6
Intellectually disabled	67

The reception we have received in this endeavor has made us proud. Moreover, seeing parents are increasingly interested in their children's education gives us hope for those with intellectual disabilities. Within Bannu's teaching curriculum we are constantly updating to reach a higher quality. In addition, we recognize that participation on the part of the siblings, students now benefit both outside and inside the home



We continue to deliver benefits to the community.

Every year we help our students' families by facilitating inclusion on every helping program in the country. For example, the government have "health cards," which provides health discounts and services for a segment group of people who meet some requirements. School parents can apply for some of these assistance programs, and we accelerate their process. Meet the benefits that school families could obtain:

- 25** Niramaya Health Cards
- 60** Sadharam Certificates
- 100** Health Cards

Compared to the previous year, the same amount of cards and passes were delivered. We maintained the same amount of beneficiaries, and that was the main objective.



Parents Involvement

65% Parents Participation

25

Parents meetings organized

11

Parents counseling sessions

5

Parents Work Shops



We maintained a nearly constant participation on the part of parents over this past year. Each year saw more than 60% cooperation. As we expand, adding more students, more parents will start this process with us.

We feed dreams through sport

Twenty-three medals at the district level and five in the state category were the achievements of this year, a tremendous pride for the Bannu Institute. We continue to improve the conditions for the future of our athletes. We have expanded our services in the area of physical fitness and team sports for the good of our students and for the pride of our community as a whole.

	GOLD medals	SILVER medals	BRONZE medals
District Level	9	6	8
State Level	1	2	2
	10	8	10



We were ecstatic to see, after an organized effort, that **50 of our students** represented Bannu in different sports at the district and state level. In total, our great dreamers brought home **28 medals**.



Recreation and cultural activities threw this

Every year Bannu institute participates in different events where students interact outside our facilities while being involved in cultural and recreational activities. Currently, our participation rate involves approximately half of our student population. This initiative has created a bond between students, teachers as well as the greater community. Our current goal is to provide more methods to increase participation.

2 Flash Mob

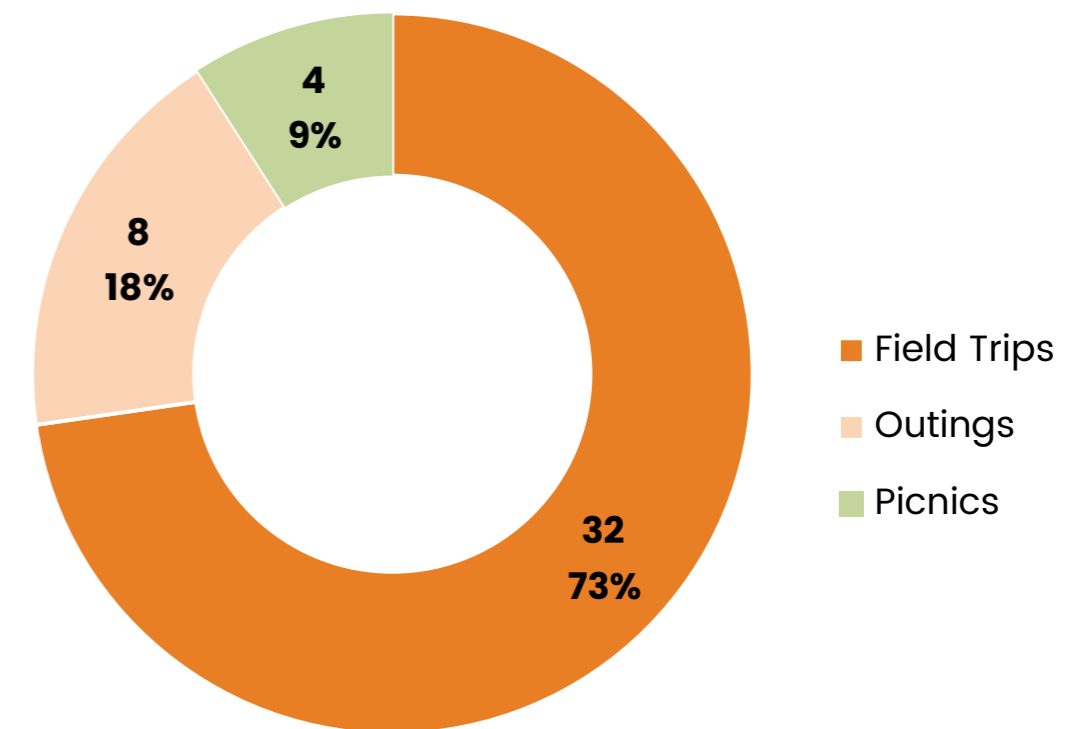
3 All special school competitions

50%

of participation of our students

- Disability Day
- Father Jarom Birthday Celebrations
- Annual Day celebrations
- All Religious Festivals
- Republic day celebrations
- Independence Day

Recreational Activities



We celebrate each achievement.

Domains were chosen	Students enrolled	Goals achieved Graduated
Hyperactive Students	35	18
Vocational Students	30	9
Personal Skills	50	40
Social Skills	40	30
Occupational Skills	25	25
Recreational Skills	15	10
Self - Grooming Skills	60	45
Basic Academic Skills	35	35

The entire team of the institute has been striving to make a change in the lives of all those who become a member of this dynamic team. This year 290 students enrolled with us in the different domains, and with the help of our dedicated teachers, at least 212 managed to thrive and graduate. More than 70% achieved a level of self-sufficiency that has changed the lives of our students as well as their families.

We have 100% effectiveness in our basic academic skills program. All those who attended were able to meet the requirements. There was a great effort on the part of the institute as well as the students and families involved, demonstrating that anything is possible.



To date, we have graduated more than 200 students from our different programs!

Life Skill and Vocational Training

We wished you could share with us the excitement that our students experienced when they finished a cultural piece; for that reason, every year, we keep motivating them to participate in more vocational domains. This training is an essential area for our students; they became more independent by creating something that they could sell or trade. Currently we have a 13% participation in each of the above vocational domains. The institute will keep encouraging students every year in these domains to raise the participation rate.



Vocational Skills	Participation of the children	No. of Products Made
Candle Making	10	100
Making Paper Bags	8	400
Soap Making	8	30
Making Greeting cards	12	80
Making Ornaments	9	120
Rakhi's	13	200
Lord Ganesh Idol	10	150
Diwas Painting	30	300
Gardening	12	NA
Weighing	15	NA



BANNU CHARITABLE HOSPITAL IN ETURNAGARAM

We are increasingly committed to the cause



Eturnagaram – mulugu district – Telangana State – India

A substantial share of its population in India lives on less than \$3 a day. It is hard to imagine the challenges facing our population. The values of our organization have driven the hospitals expansion and unending drive to improve the health of those we serve.

The hospital will push the envelope in its capability to deliver specialized care, enhancing patient access to care not available in Mandal, and provide treatment at a cost as low as possible. Second, we assume accountability for delivering a full continuum of integrated care – from primary to specialty care. Underpinning all these efforts will be a dedication to a culture of continuous improvement. Our aim is to ensure patients a full healthcare commitment as well as the additional value to the patient experience within our facilities.



Guided by the needs of our patients and their families, we aim to deliver the very best health care in a safe, compassionate environment; to advance that care through training and education and improve the health and well-being of the diverse community we to serve.

BANNU HOSPITAL *OUR YEAR OF SERVICE*

IN-Patients treated	6700
OUT-Patients treated	34500
Diagnostic test done	99000
Radiologic test done	43750
Ambulance rides/ transfers	150
Surgeries Conducted	126



India maintains alarming numbers in terms of health. We know that for every 10,000 people in the country, there are at least three hospital beds, something that we want to improve with the impact that the hospital can have, starting with Mandal. For our joy, we have managed this year to treat more than 16,000 people inside our doors. We are grateful for our team of professionals and volunteers to whom we keep supplied and trained with the necessary tools for their life-saving work. Motivated by this dedicated group of individuals, we have garnered the attention of 72,000 people outside the hospital, moving as far as possible to provide aid for those crying out for help.

To achieve this, we have different services available to our catchment area.

. Here are the services that we will provide throughout the year:



Emergency Care Services

The primary objective of the center is to provide acute care to injured/ill patients. This center will provide round-the-clock service with 24 x 7 access to modern operating theatres & imaging and diagnostic tools for immediate and accurate diagnosis of the patient's condition. We also have a 24-hour ambulance service with ventilator capabilities.

Obstetrics & Gynecology

Bannu Hospital provides a board-certified, highly qualified trained ob/gynecologist comfortable with sonograms, C-sections, high-risk pregnancies, and all related procedures.

Out-Patient Department

The hospital's outpatient department provides access to experienced consultants with expertise in OB/Gyn and Internal Medicine and allow us to deliver advice, diagnosis, and treatment across many diseases with exceptional speed and accuracy.

24 Hour Ambulance Service

We also provide a toll-free service for 24-hour ambulance service with a trained Paramedic staff equipped with advanced life saving tools.

Operation theater

Bannu hospital has state of the art air-conditioned Operation Theater with all new equipment including sterilization unit, automatic hydraulic table, high precision headlights, suction, cautery, boiler unit, Mechanical Ventilator, crash cart to name a few. Thanks to this team, we have been able to carry out 335 operations within our room, we hope to increase the number of attended.

Pharmacy Department

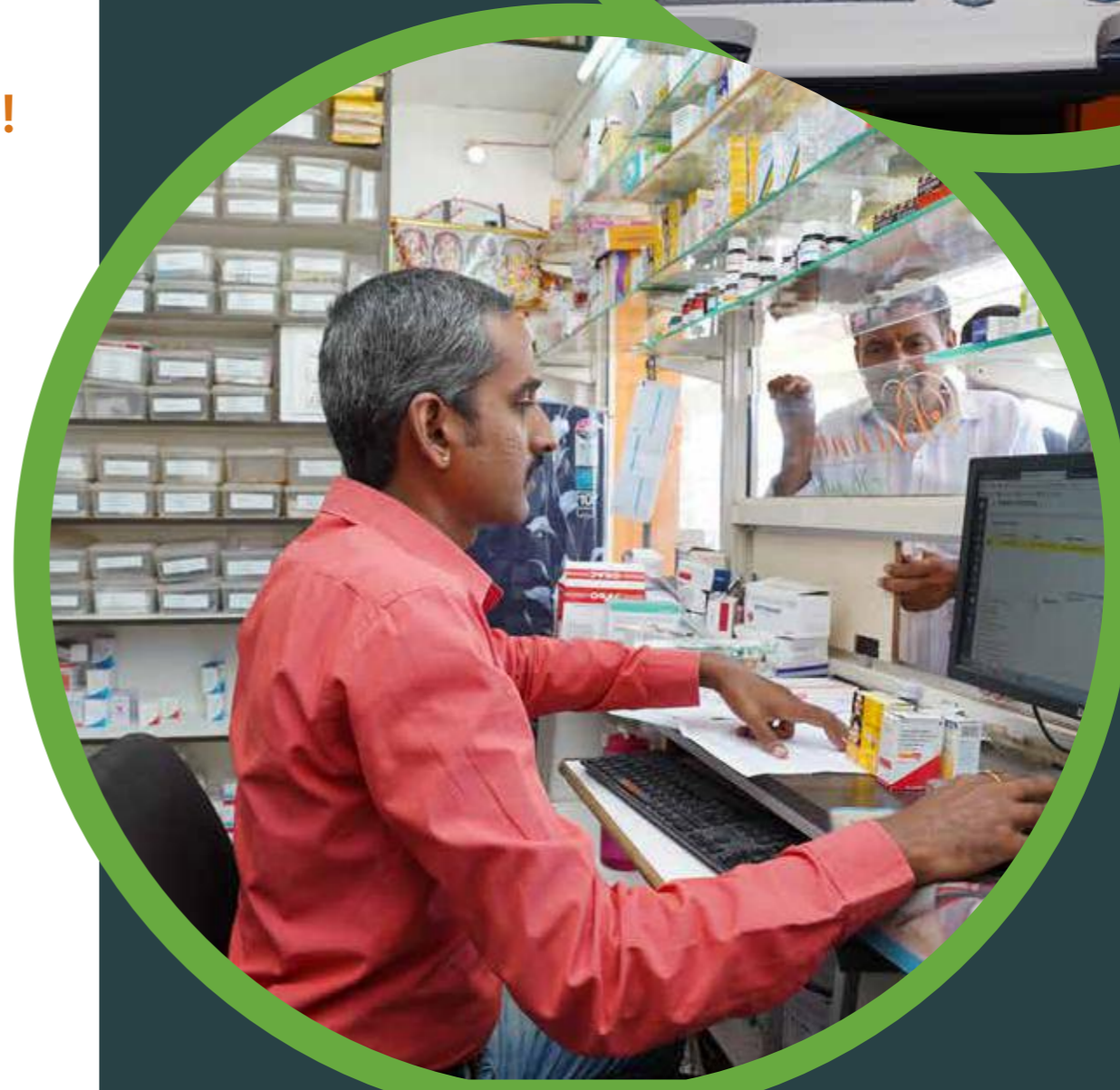
Bannu pharmacy has all the basic as well as emergency lifesaving drugs available all the time. These are at a discounted price and sometimes free based on the patient's financial capacity.

Clinical Lab – Preparing for any emergency!

India has a mysterious recurrent endemic of viral fevers every year with recorded deaths of 10,000 in the past five years. Here at Bannu, we prepare for the future, which is why we have opened our laboratory, not only to meet the different needs of our patients but also to have the equipment and people indicated for any viral emergence. Bannu has all-new lab equipment including; cell count, chemistry analyzer, centrifuge, microscope, refrigerator, and other related equipment all operated by our full time certified technicians.

Department of Radiology

Bannu hospital has a new X-ray and a Doppler ultrasonogram with a qualified technician. A trained radiologist will read patient reports.





CLINICAL ROTATION FOR MEDICAL STUDENTS/MEDICAL VOLUNTEERS

The Clinical rotation for medical students and medical volunteers is an invaluable program that consists of a full teaching staff at Bannu Health Center in Eturnagaram, Telangana, India. The rotation guides people through a unique learning and healing journey, which proves to be beneficial in many ways. Students are afforded the opportunity to enhance their education and clinical experience by reaching out to this program. Those involved will see first hand, the impact on the underserved in rural India.

We provide hands-on clinical experience, medical education, and training to medical and nursing students locally and internationally with a future goal to make it a more organized and structured program. We also have medical volunteers consisting of practicing doctors and nurses.



BANNU HEALTH CAMPS & MOBILE CLINICS

The route to more people.

India has one ambulance for every 40,000 people, an unacceptable statistic. Bannu, with the idea of helping those in the most rural of areas, regularly take utilize members and equipment as mobile clinics in these difficult to reach areas. If they cannot find us, we will go to them. In this program, we have managed to move the necessary equipment to have mobile clinics in areas which have never had services before.

Impact

Mobile clinics and free camps conducted	50
Patients seen	14500
Diagnostic labs done	8000
Medicine freely dispersed	USD 30,000 <small>(INR 20 Lakhs)</small>

After a long year, the program showed good results. We successfully closed out the year by conducting fifty camps, treating more than 3000 people. With the help of our past donor supported campaigns, we were able to deliver a rate amount of USD 30.000 in free medicine for people in need. These mobile clinics have been universally well received.



INTERNATIONAL VOLUNTEER SHIP PROGRAM

Volunteers from any country in the world can join our team inside the Bannu organization. We've been receiving students for our two principal programs, which are the institute and the hospital. The institute takes students and provides the education while laying the groundwork our values, methods, and cultural habits; they spread their knowledge by conducting classes and sharing their culture.

Bannu hospital has various medical professionals from the USA and other countries who be volunteering to serve this community's medical needs. These include medical and surgical doctors, nurses, dentists, pharmacists, therapists as well as various medical and nursing students from American colleges and schools.

Meet some of our recent volunteers' stories:

1. Dr. Kyle Knuppel came again from the USA. It is his third year in a row. He is one of the closest friends from Dr. Charanjit, and the society couldn't be more grateful for his work. He stayed ten days and attended the free medical camp at Thimmampeta as well as conducted about six free antenatal care clinics with the help of a local translator.

2. Dr. Yvette, Gynecologist, came in 2018 to collaborate with the hospital services and joined us for the awareness camps.

3. Marcus came from a USA college. He was a volunteers to our institute, but became a part of our family, students and teachers were grateful with his work and asked him to come back anytime.



BECOME A VOLUNTEER

The Bannu Hospital and the School have their doors opened to students who are seeking internships in an underserved setting. This will provide benefits to two categories of people. Firstly, and most importantly, it will help to change and transform the lives of underserved people. Secondly, it will give you a chance to grow and learn in your personal development for goodness. You will be required to fill out a form to see if any opportunities that Bannu offers are the right fit for you!



The impact has been quite good during the last years:

YEAR	TOTAL PARTICIPANTS	DURATION
2014	2	2 Weeks
2015	2	2 Weeks
2016	4	2 Weeks
2017	3	2 Weeks
2018	2	2 Weeks



MEDICAL SUPPLIES AND EQUIPMENT PROGRAM

Bannu has partnered with Project CURE, which is a USA based non-profit organization by starting a medical supply and equipment program. This program aims to supply equipment to the government, and the NGO run rural hospitals in India, free of cost.

The program has successfully sent out more than three forty feet containers from the USA to India to Bhupalpally Government Hospital in Eturnagaram, to Osmania Government hospital and to helping hands NGO hospital in Dehradun. In the year 2018, hospitals in regions of Bhupalpally and Warangal district received the donation of one 40ft container worth of around USD 300,000. We deliver 3 of these containers.

Osmania Government hospital received one 40ft container, which worth **USD 300,000 (INR 2 Crore)**, in December 2018.





COMMUNITY HEALTH AWARENESS PROGRAMS

Awareness program consists in educating people to learn how to take care of themselves, where can they find help, and what should they do in health care situations. Here, some of our camps programs:

Free Antenatal camps

Bannu hospital conducts widespread antenatal care clinics to pregnant women and mothers of newborns. Our full-time doctors visit various Anganwadi centers in the surrounding manuals to gather visit pregnant women and conduct awareness camps along with free blood tests

Cancer Screening Camps

Our full-time doctors also conduct cervical cancer screening tests and provide appropriate education, guidance, and follow-ups.

This Programs help with connecting the community members to the services and resources that are available around them. Look at the 2018 results:

10

Camps

4000

Attendees

1600

Lab Test

usd 9
per peson

Medications

IMPORTANT YEAR CALENDAR EVENTS 2018

JAN

Free Ambulance Service



FEB

Students visited the "thousand pillar temple."



MAR

Free endocrinology camp



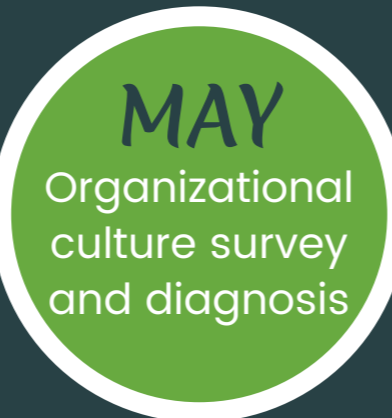
APR

Special Olympics - State level participation



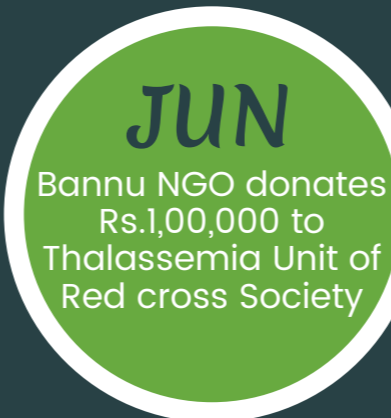
MAY

Organizational culture survey and diagnosis



JUN

Bannu NGO donates Rs.1,00,000 to Thalassemia Unit of Red cross Society



JUL

Parents meeting



AUG

Reverse Osmosis Water System with 250 Lts/ Hr capacity



SEP

Bannu NGO USA branch donates medical supplies and equipment.



OCT

Diwas stall



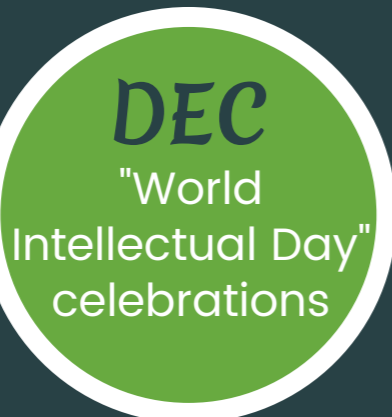
NOV

125 people donated their blood with us.



DEC

"World Intellectual Day" celebrations



Bannu opens its doors to every person who desires to collaborate. Every one of our projects can get to more people, start by joining our causes. Please think of how you could change the life of one person and guide them to a brighter future.

One gift to our students could be the beginning of an escape from poverty.

HOW TO DONATE

Online: Bannu.org

By phone: +91 99490-75873

Mail a check payable to "Bannu Arogyada Seva Society" to any of our addresses below.

For wire transfers or to donate stocks,

Contact: Charan@bannu.org

Other ways to give

● Gifts of securities ● Gifts of property ● Planned giving and

Get involved

- Become a volunteer
- Visit a Bannu program
- Join our young professionals' group
- Volunteer or intern with us
- Participate in our camps
- Sponsor an event



www.Bannu.org



Facebook.com/Bannu-Arogyadha-Seva-Society-NGO-324294371518911

INDIA



Bannu Arogyada Seva Society

2-7-187 Excise Colony

Warangal ,Telangana

INDIA 506001



Kiran Kumari



+91 99490-75873

USA



Bannu

157 Main Street Suite 1

Berlin, New Hampshire

USA 03570



Dr. Charanjit Reddy Veeramalla



7327626849



Charan@bannu.org



kyle@bannu.org

