

SIRISHA REHABILITATION CENTRE (SRC)



ANNUAL REPORT: 2020 - 2021



PRESIDENT

D. NO: 3-57, VEERANKILOCK, PAMIDIMUKKALA MANDAL
KRISHNA DISTRICT. ANDHRA PRADESH. INDIA. PIN CODE: 521 250

Website: www.sirisharehabcentre.org

E-mail: srcpamidi@yahoo.com / srcpamidi@gmail.com

Mobile: +91 9441413161

... SRC works with wide Service Spectrum covering from Identification to Empowerment for Inclusion in Community as a RIGHT with better Participation, Access, Sustainability & Quality of Life (QOL)...

SIRISHA REHABILITATION CENTRE (SRC)

ANNUAL REPORT FOR THE YEAR: 2020 - 2021

INDEX

S. No.	Content	Page No.
	From President's Desk	03
1	Introduction	04
2	About the Organization	04
	Genesis	04
	Vision	05
	Mission	05
	Targeted Groups	05
	Objectives	05
	Core Values	05
	Service Delivery Models	05
	Service Spectrum	06
3	Contact Person & Details	06
4	Legal - Registration Status	07
5	Bank Details	07
6	Executive Committee Members	08
7	Projects	08
	Projects Completed	08
	Projects Running	10
8	Programmes / Activities / Celebrations / National Events	17
	Parents' Meets	18
	Celebrations / National Events	19
	Distribution of Dry Ration during COVID 19	20
	Distribution of Cooked Food during COVID 19	20
9	Visitors	22
10	Mobilization of Resources	22
11	Benefits, Impact of Services, Credentials & Awards	23
12	Challenges & Opportunities	26
13	Future Vision	27
14	Requirements & Appeal	28
15	Circulation & Dissemination	29
16	Organizational Structure & Geographic Location	30
	PHOTO VIEW & NEWS PAPER CLIPS	31
	AUDIT REPORT 2020 -2021	

SIRISHA REHABILITATION CENTRE (SRC)

ANNUAL REPORT FOR THE YEAR: 2020 - 2021

From the Desk of President's

COVID 19 has changed everything and affected everyone all over the Globe in general and particularly Persons with Disabilities. Withstanding these unexpected and unhealthy challenges and vulnerabilities, SRC has continued its service journey following the guidelines issued by the Government from time to time. It is the privilege and happy moment for me to release the “Annual Report of 2020 - 2021” of Sirisha Rehabilitation Centre (SRC). This covers its Services, Supports, Projects, Programmes, and Celebrations carried out during the same year and resulted impact. It is to inform that SRC has continued its service journey and successfully completed its ‘17th year’ (2004 - 2021) and achieved several milestones. The Services of SRC in respect of Training and Rehabilitation of Persons with Intellectual & Developmental Disabilities have been accepted and recognized by the Stakeholders and other groups as it works with innovation and creativity matching to the needs and skills of the targeted groups particularly during the present Pandemic which affected them mentally, economically, and socially. The services and supports provided to the general public during the present pandemic are commendable and improved the connectivity for further planning to shift to ‘digital environment’ for connectivity, communication, learning, sharing, & documentation.

During the year, SRC has started a new project of “Elder’s Care” and provided cooked food, medicine, health care, sanitary items, blankets, and other matching services and supports at their home itself with the aim of their happy and active living within the same community.

*During COVID 19 in particular and in general, Organization is still struggling to get the matching resources and finding difficulty in reaching the targeted groups and to equip to answer the concern of the Parents that “**what will happen to the child after us?**” which gains top priority in its service spectrum.*

With concern and commitment, I express my sincere thanks to all the Government, Private, Corporate, Donors, Well-wishers, Staff, and other Stakeholders who have supported us either directly or indirectly and request all for your continued support so that the processes of empowering the targeted groups both economically and socially for their independent living within Accessible, Healthy, Friendly, Inclusive, and Sustainable Environments at all levels will be continued with better participation, accountability, responsibility and visibility. Let us join together for making a change with better impact & sustainability with visibility

.....President

----- **Page 3**
.....SRC works with wide Service Spectrum from Identification to Empowerment of Persons with Intellectual & Developmental Disabilities for Inclusion as a RIGHT with better Access, Participation, Sustainability & Quality of Life (QOL).....

SIRISHA REHABILITATION CENTRE (SRC)

ANNUAL REPORT FOR THE YEAR: 2020 - 2021

1. INTRODUCTION

In view of COVID 19, Sirisha Rehabilitation Centre (SRC) has continued its Service Journey with innovation and creativity and successfully completed 17th year (2004 - 2021) of its Service journey adding several feathers into its ‘**Service Cap**’. SRC has continued its services and supports of training and rehabilitation as an empowerment of the Persons with Intellectual and Developmental Disabilities (PWIDDs) and other associated disabilities. SRC has got the unique advantage of working for the group covering both Rural and Urban Areas with better connectivity and monitoring for effective transformation for a change in their lives with better participation and visibility. During the year, SRC has started a new project of “**Elder’s Care**” who are poor and vulnerable living in rural villages.

The Projects were continued with matching services, supports, activities, programmes, celebrations and extended the same to the targeted groups during the year 2020 – 2021. All these details were documented and developed them into its “**Annual Report 2020 – 2021**” as an evidence based document. The Pandemic has opened up several windows to shift towards digital environment with better access, connectivity, relationship, communication, learning, sharing, reporting, and documentation. The details were presented below.

2. ABOUT THE ORGANIZATION

Sirisha Rehabilitation Centre (SRC) is the voluntary service organization registered under Society (2004) with the main focus of working for the Training and Rehabilitation of Persons with Intellectual & Developmental Disabilities and other associated disabilities. It works on the motto of ‘not for profit’ and extends services for all the targeted groups at free of cost irrespective of caste, creed, gender and religion. It has successfully completed its 17th year (2004 - 2021) of its service journey with innovation and creativity.

With much concern and commitment, SRC works with specific Genesis, Vision, Mission, Targeted Groups, Objectives, Core Values, Service Delivery Models and Service Spectrum matching to the abilities, skills and needs of its targeted groups and were presented below as:

Genesis: The presence of a child with special needs in the family attracts for special environment which should be barrier free for better access and utilization. The Founder, having a daughter with mental retardation took it as an opportunity and formed Sirisha Rehabilitation Centre (SRC) in the year 2004 as a voluntary service organization to work for

.....SRC works with wide Service Spectrum from Identification to Empowerment of Persons with Intellectual & Developmental Disabilities for Inclusion as a RIGHT with better Access, Participation, Sustainability & Quality of Life (QOL).....

SIRISHA REHABILITATION CENTRE (SRC)

ANNUAL REPORT FOR THE YEAR: 2020 - 2021

the rehabilitation of several such God gifted children as an empowerment with equality and dignity as a right.

Vision: Persons with Disabilities should live in the same community like their counterparts with equality, dignity, and respect as a Right.

Mission: To work for the holistic development of the Persons with Intellectual & Developmental Disability and other associated Disabilities living in vulnerable circumstances by providing training and rehabilitation services covering Social, Medical & Developmental Areas and thus working for their empowerment for better living in an Accessible, Inclusive and Healthy Environment.

Targeted Groups: The majority of the targeted groups for whom SRC is working are poor, marginalized, and vulnerable with several challenges living in rural villages covering parts of Krishna District and its surrounding districts of Andhra Pradesh, India. The targeted groups include: Children with Special Needs, Persons with Intellectual Disabilities & Developmental Disabilities, Parents, Siblings & other Family Members, Senior Citizens, Social Workers & Health Workers, Teachers of Normal Schools, Medical & Para Medical Professionals, Grass Root Workers & Community Members, Infrastructure Developers & Other Stakeholders.

Objectives: Based on the needs and dynamics of disabilities & living environment of the targeted people / groups, the objectives of **SRC** broadly cover to establish: Screening and Assessment Centers, Counseling and Guidance Centers, Early Intervention Centers, Special School, Pre-vocational & Vocational Training Centers, Care & Support Centers, Skill Development Centers, Employment & Career Guidance Centre, Sheltered Workshops, Home Based Centers & Community Based Centers, Information cum Facilitation Centre, Life Care Centers (Respite Care and Long term), Elder's Care & others suiting to the challenges, skills & needs of the people who need support.

Core Values: While working, SRC follows specific Core Values which include: Participatory, Accessible, Flexible, Need Based, Evidence Based, Responsible, Accountable, Transparent, Replicable, Scalable, Sustainable, Concerned, Committed and Service to Others.

Service Delivery Models (SDMs): SRC is extending the need based Services, Supports, Programmes and Interventions at Institute (Institute Based Rehabilitation - IBR), Home

----- **Page 5**
.....SRC works with wide Service Spectrum from Identification to Empowerment of Persons with Intellectual & Developmental Disabilities for Inclusion as a RIGHT with better Access, Participation, Sustainability & Quality of Life (QOL).....

SIRISHA REHABILITATION CENTRE (SRC)

ANNUAL REPORT FOR THE YEAR: 2020 - 2021

(Home Based Rehabilitation - HBR) and Community (Community based Rehabilitation - CBR) matching to the abilities, skills, needs and vulnerabilities of its targeted groups. The combination of SDMs is more effective to reach the unreached both quantitatively and qualitatively. At the same time, such service delivery system with community connectivity and participation are more effective for the facilitation to work for the removal of barriers (to work for Barrier Free Environment – BFE or Accessible Environment) and prevention of the causes of disabilities (as Disability Free Society – DFS). All such SDMs will work for the empowerment of the targeted groups with better sustainability and improved quality of life (QOL) in an accessible and inclusive community / environment.

Service Spectrum: SRC has developed quite broad Service Spectrum covering from the stage of Identification to Empowerment (both Economically & Socially) with need based Strategies & Interventions with innovation and creativity and covers: Awareness, Advocacy & Orientation – Early Identification; Counseling & Guidance and Screening & Assessment; Disability Certification and Aids & Appliances; Care & Rehabilitation; Early Interventions – School Preparedness – Mainstreaming; Education – Special & Inclusive; Pre-Vocational & Vocational Training; Employment, Livelihoods – Open & Sheltered; Income Generation Programmes – Self Employment; Self Help Groups (SHGs) - Group Employment; Financial supports; Residential Facilities – Respite Care / Short Term and Long Term; Training for Parents, Community Members, Teachers & other Stakeholders; Guardianship, Health Insurance, Travel Concessions, Pension, Scholarships, Elder’s Care, etc.; Prevention of the Causes of Disabilities – Disability Free Society (DFS); Accessible Environments - Barrier Free Environment (BFE); and Information on Rights, Schemes, and Benefits with Referral Services. Majority of these services were provided directly and others through networking & referrals with other concerned Departments of both Government and Private. *During the year, majority of these services were provided to the targeted groups on home based model matching to the guidelines of COVID 19 issued by the respective authorities from the Government so that the targeted groups will be protected with better safety covering mental, medical, social and economic areas.*

3. CONTACT PERSON & DETAILS

M. Immanuel, President

D. No: 3-57, Veerankilock, Pamidimukkala Mandal, Krishna District.
Andhra Pradesh. INDIA. Pin Code: 521 250 Cell No: +91 9441413161

Website: www.sirsharehabcentre.org E Mail: srcpamidi@gmail.com

.....SRC works with wide Service Spectrum from Identification to Empowerment of Persons with Intellectual & Developmental Disabilities for Inclusion as a RIGHT with better Access, Participation, Sustainability & Quality of Life (QOL).....

SIRISHA REHABILITATION CENTRE (SRC)

ANNUAL REPORT FOR THE YEAR: 2020 - 2021

4. LEGAL - REGISTRATION STATUS

SRC is legally registered under various provisions of Government of India and Private and its Status includes:

- ✓ Registered under Society Act XXXV 2001 vide No: **100/04** at the Office of Registrars of Societies at Vijayawada, Krishna District, Andhra Pradesh.
- ✓ Registered under RPWD Act 2016, Assistant Director, Department of Disabled Welfare & Senior Citizens, Government of Andhra Pradesh, Machilipatnam, Krishna District, Andhra Pradesh.
- ✓ Registered with the National Trust as a Registered Organization (RO), under MSJ & E, GOI, New Delhi.
- ✓ Registered as an Organizational Member of LLC of National Trust under MSJ & E, GOI, New Delhi.
- ✓ Registered under E DARPAN, NITI Aayog, Government of India, New Delhi.
- ✓ Registered with the Ministry of Social Justice & Empowerment for Online Project Services (E ANUDAAN), Government of India, New Delhi.
- ✓ Registered with PARIVAAR, A National Federation of Parents' Associations (NFPA) working for Intellectual & Developmental Disabilities, Bangalore & New Delhi.
- ✓ Got Tax Exemptions under section 12A & 80G of Income Tax Act, Government of India, Vijayawada.
- ✓ Registered with Department of Income Tax and obtained PAN CARD.
- ✓ Registered under Foreign Contributions Regulation Act, FCRA Wing, Ministry of Home Affairs, Government of India, New Delhi.

5. BANK DETAILS:

Name & Address of the Branch	Union Bank of India Veerankilock, Pamidimukkala Md., Krishna District. A. P.	State Bank of India Vuyyuru, Krishna District, A. P.	Union Bank of India Veerankilock, Pamidimullala Mandal, Krishna District. A. P.
Account No.	060001100009044	30576316131	060011011000182
IFSC CODE	UBIN0806005	SBIN0001408	UBIN0806005
Type of Account	SB Account	Current Account	Current Account
Purpose of Account	General Purpose	General Purpose	Foreign Contributions
Mode of Operation	Joint Operation by President & Treasurer.		

.....SRC works with wide Service Spectrum from Identification to Empowerment of Persons with Intellectual & Developmental Disabilities for Inclusion as a RIGHT with better Access, Participation, Sustainability & Quality of Life (QOL).....

SIRISHA REHABILITATION CENTRE (SRC)

ANNUAL REPORT FOR THE YEAR: 2020 - 2021

6. EXECUTIVE COMMITTEE MEMBERS:

S. No	Name	Designation	Occupation & Contact Details
1	Sri. M. IMMANUEL	President	Accountant (Retd.). OLD MIG, Block - 13, F-4, Housing Board Colony, Bhavanipuram, Vijayawada. Krishna Dist. A. P.
2	Sri. P RAVI KUMAR	Vice President	Lecturer (Private). VANUKURU, Vijayawada, Krishna Dist. A. P.
3	Smt. J YOHOSHUVA	Secretary	Employee in Bank (Private). H. No:3-81, Veerankilock, Krishna Dist. A. P.
4	Sri. Syed. Karimulla	Joint Secretary	Private Bank. H. No: 25-16-61, Srinivasa Rao Thota, Guntur., A. P.
5	Smt. D SAROJINI	Treasurer	House Wife. H. No: 10/1, Rajendra Nagar, Gudivada, Krishna Dist., A. P.
6	Dr. PAMMI NIRMALA	Executive Member	Business. Vanukuru, Krishna Dist. A. P.
7	Dr. ANUSHA	Executive Member	Doctor. F No: A - 203, Srichakra Residency, Navodaya Colony, Thadepalli. Guntur Dist. A. P.

7. PROJECTS:

Matching to the guidelines of COVID 19, SRC has continued all the Projects of last year (2019 - 2020) with innovation and creativity by shifting from Centre based to Home based. It has added another milestone into the service cap by starting a new project entitled “**Elder’s Care**” on home based model. It has developed several strategies, initiatives & systems to work differently matching to the abilities, needs, vulnerabilities and skills of the targeted groups and the dynamics of their living environment / community and particularly in view of the challenges and vulnerabilities emerged due to the present pandemic COVID 19.

Brief details of the Projects successfully completed (till now) and run during the current year 2020 – 2021 were furnished below as:

A. Projects Completed:

The details of the Projects successfully completed by SRC since its beginning (2004) were furnished below as:

Page 8

.....SRC works with wide Service Spectrum from Identification to Empowerment of Persons with Intellectual & Developmental Disabilities for Inclusion as a RIGHT with better Access, Participation, Sustainability & Quality of Life (QOL).....

SIRISHA REHABILITATION CENTRE (SRC)

ANNUAL REPORT FOR THE YEAR: 2020 - 2021

S. No	Project	Details	No of Beneficiaries	Impact / Outcome
1	Residential Bridge Camp (RBC)	Sarva Shiksha Abhiyan (SSA), Government of Andhra Pradesh (2006-07).	50 numbers of children (both boys & girls) with mental retardation.	Mainstreamed into the regular schools in their respective community / village.
2		Sarva Shiksha Abhiyan (SSA), Government of Andhra Pradesh (2008-09).	47 numbers of children (both boys and girls) with mental retardation.	Mainstreamed into the regular schools in their respective community / village.
3	Vocational Training Programme (Computers)	Rajiv Gandhi Youth Employment Generation Training (2005-06).	50 number rural children completed 10 th Class.	Helped to gain useful employment (open, self & group).
4	Vocational Training Programme (Women)	Tailoring & Embroidering (2006-07) supported by SRC itself.	50 numbers of rural poor women.	Helped for self-employment as livelihoods.
5	Bonded & Child Labours	Care, Nutrition and Academics (2007-08) by SRC itself.	50 No., of children working at agriculture, & other related local establishments	Trained for mainstreaming for the education & community.
6	Medical Care & Cataract Operations	Screening, Assessment and Cataract Operations with Spectacles by Government of A. P. (2006 -08).	3000 rural people of Krishna & Guntur District.	Better vision for better access with livelihoods and happy living.
7	Distribution of Aids & Appliances for PWDs.	Awareness, Screening, & Assessment with supporting devices by Government of A. P. (2006-07).	5 tricycles, 10 hearing aids & 50 crutches were distributed	Improved mobility with better access for required services and supports.
8	Old Aged Home	Care and Food on residential basis supported by SRC itself (2004-08).	25 Senior Citizens who are orphans and vulnerable.	Better care, support and protection.

SIRISHA REHABILITATION CENTRE (SRC)

ANNUAL REPORT FOR THE YEAR: 2020 - 2021

9	Aspiration Centre	An Early Intervention Centre of the national Trust for preparing for mainstreaming (2009-14).	55 Children with Special Needs in the age group of 0-6 years.	Mainstreamed into Normal Schools as well as into Special Schools.
---	--------------------------	---	---	---

B. Running Projects:

During the year 2020 - 2021, SRC has operated Six Projects which are need based and are shown below as:



Brief details of each Project in respect of the targeted group, services & supports provided, number of beneficiaries, outputs, impact and other details were presented below as:

- 1) **Sirisha Disha cum Vikaas Centre (SDVC):** Tuning to the new guidelines (in view of COVID 19) issued by the National Trust, SRC has continued this Centre (SDVC) for Children (with disabilities of the National Trust Act) in the age group of 0 - 18 years covering four disabilities i.e., Autism, Cerebral Palsy, Mental Retardation & Multiple Disabilities specified under the National Trust Act.

In view of the guidelines of COVID 19, the services and supports were provided by the team to the targeted groups at their respective home. Every safety measure has been taken care by the team to protect themselves and the targeted groups at their home and community.

Page 10

.....SRC works with wide Service Spectrum from Identification to Empowerment of Persons with Intellectual & Developmental Disabilities for Inclusion as a RIGHT with better Access, Participation, Sustainability & Quality of Life (QOL).....

SIRISHA REHABILITATION CENTRE (SRC)

ANNUAL REPORT FOR THE YEAR: 2020 - 2021

SDV Centre has been developed to provide training and counseling to both Children and their Parents. This is a Day Care Centre and provides services and supports to the Beneficiaries (at their home & community) and their Parents / Siblings / Grandparents who took active participation at Centre and Home. During the year, **30** (16 Male + 14 Female) Beneficiaries have got the benefits at their home / community matching to their abilities, skills, needs and vulnerabilities. The growth achieved during the year is significant and the processes of mainstreaming into the Normal Schools and creation of employment or income generation activity is going on (got affected due to the challenges emerged out of COVID 19) with better networking with the Schools, Community, Industries, Establishments, and Authorities. At the same time, Centre has facilitated for School preparedness and removal of barriers at all places. *The team has taken care (as per the COVID 19 guidelines) for self, beneficiaries, parents, other family members, and community members. Also imparted awareness cum orientation for these groups for better safety. Based on the change in the pandemic situation, the beneficiaries will come back to the center based as done before COVID 19.*

The planned (based on Individualized Educational Programme – IEP) Services and Supports were provided to all the inmates at free of cost at their home. The team has utilized the transportation facility to visit the home / community of each beneficiary. All the beneficiaries belong to the category of BPL (Below Poverty Level as per the guidelines of the National Trust) which reflects the linkage of Poverty, Disability and Development. All the beneficiaries have been enrolled under NIRAMAYA, a Health Insurance Scheme of the National Trust, New Delhi and many have got the benefit of its utilization from time to time.

This Day Care Centre (with a shift to Home based) has been guided and supported by the National Trust, under Ministry of Social Justice & Empowerment, Government of India, New Delhi. In addition to these supports, Organization mobilized required resources from the local Donors & establishments and thus continued the Services and Supports with innovation and creativity with *better participation of their Parents, Siblings & other Family Members mostly at Home / Community.*

- 2) **Sirisha Special School (SSS):** SRC has accepted Disability Rehabilitation as an opportunity and continued the Special School for the Children (in the age group of 6 - 18 years) with Intellectual & Developmental Disabilities and other associated

SIRISHA REHABILITATION CENTRE (SRC)

ANNUAL REPORT FOR THE YEAR: 2020 - 2021

disabilities. It has got suitable environment with facilities to provide need based services and supports to the Beneficiaries on both residential and day care basis with better protection and security. *In view of COVID 19, all the need based services and supports were provided to the beneficiaries at their home / community itself by following the guidelines issued from time to time. In addition, e tools like: Messenger, WhatsApp, Voice Calls, Video Calls, Audio & Video Clips, etc., were extensively used with digital environment for better connectivity, participation, relationship, communication, learning, sharing, reporting, and documentation. This shift has been recorded in the justification while applying for the grant in aid (renewal) to DEPWD, MSJ & E, GOI, New Delhi for the year 2020 - 2021.*

With such change in the year, **65** Beneficiaries [Male: 40 & Female: 25 and out of them 10 on Residential (all Male) & 55 (30 Male & 25 Female) on Day Care basis] have got the benefit (during the year 2020 - 2021) of Special Education with supporting Services covering Activities of Daily Living (ADLs), Physiotherapy, Speech & Communication, Behavior Modification, Sports & Games, Recreational & Cultural and other need based matching to their challenges, skills, needs and living environment & circumstances. In view of COVID 19, the above plan of day care & residential care has got shifted to home based with better protection and safety to all as per the guidelines. Also concentrated on pre-vocational activities and prepared them to take up the vocational training in various trades matching to their skills, needs and living circumstances including their Parents. Out of 65 Beneficiaries, 65 (100%) belongs to the category of BPL which reflects their economical position, vulnerabilities and consequences on Growth, Development and Quality of Living (QOL) at Home and Community. All the interventions of Special School are participatory with better visibility. *The shift from center based to home based is effective with belongingness as the beneficiaries are in the same environment (home). With this difference, the parents and other family members could understand the reality of the pandemic situation and accepted to continue the training and rehabilitation. Also supported the beneficiaries and family with the supply of Dry Ration, Cooked Food, Masks, Sanitizers, Medicine, Health Care, Blankets, Aids & Appliances, and others.*

This Project is supported by the Department of Empowerment of Persons with Disabilities, under the Ministry of Social Justice & Empowerment, Government of India, and New Delhi and the Organizational contributions were mobilized with

SIRISHA REHABILITATION CENTRE (SRC)

ANNUAL REPORT FOR THE YEAR: 2020 - 2021

Members and Individual Donors. *SRC is putting its best efforts to withstand the challenges and limitations resulted due to the present pandemic of COVID 19.*

- 3) **Sirisha Vocational Training Centre (SVTC):** COVID 19 has changed the mode of training and facilitation. Giving priority for employability and economical rehabilitation, SRC has continued this Centre with special focus on Skill Development in various Vocations (in addition to the services and supports part of Training and Rehabilitation). During the year, Organization has given priority for the trades of: Surf Making (Bulk), Tailoring (both Traditional and Fashion Designing), Plates Making (Meals), Glass Painting, Pot Painting, Greeting Cards, Computers, Gardening and Cooking. This process has improved their skills & capacities and got motivated for individual development with opportunities for livelihoods with or without the support of their Parents, Family Members or Institution which led for their economic empowerment with employability. *In view of the limitations and challenges of the present pandemic, the activities of training and rehabilitation have been shifted from Centre to Home / Community. With all the safety measures (as per the guidelines issued from time to time), the team has moved to the home / community of the beneficiaries and imparted the training with the participation of their parents, siblings, & grandparents and community members as part of networking as a strength for better placement.*

With the innovation and creativity both in trade and training, Organization has provided training (shifter from Centre to Home / Community) during the year 2020 - 2021 on day care basis (with respite care – short stay) to **25** members (Male: 10 & Female: 25 in the age group of 18 years and above) and it has resulted for the benefit of improved skills & employability. Organization has initiated income generation activities with the selected group of trainees both at *Home and Community*.

In view of the present pandemic situation, Organization could not provide the opportunity to the trained PWIDDs to participate in exhibitions put up at various places supported by the Government and Private for displaying products made by them and thus limited the support for connectivity, networking and marketing of the products. SRC is running this Centre on its own and looking forward to get regular support from Government or Private or Corporate or Funding Agencies (both National & International). Organization is mobilizing Parents to develop Sheltered or Protected

SIRISHA REHABILITATION CENTRE (SRC)

ANNUAL REPORT FOR THE YEAR: 2020 - 2021

Workshop within the Organization preferable on cooperative mode and/or partnership mode so that parents along with their children will get empowered for better living.

- 4) **Sirisha Home Based Centre (SHBC):** SRC has given priority to reach the unreached targeted groups at their home & community itself, and developed this Centre in the Rural Villages situated in Krishna District of Andhra Pradesh. The study area covers parts of three mandals namely Vuyyuru, Kankipadu, & Thotlavallure. The villages covered includes: Vuyyuru; Gandigunta; Ekamur; Peddaairala; Neppalli; Polavennu; Punadipadu; Boddapadu; Kankipadu, and surrounding villages of Krishna District, Andhra Pradesh.

This project has been started in 2018 (April) and successfully completed its third year (April 2018 – March 2021) with innovation and creativity. It is the regular Project and during the year 2020 - 2021, **25** (Male: 18 & Female: 07) CWIDDs have got the benefit of services & supports catered at their home & community. In addition, the need based services and supports like training in Activities of Daily Living (ADLs), Behaviour Modification, Physiotherapy, Speech & Communication, Support Devices, Fun & Learning Activities, Academics, Leisure & Recreational Activities, and Aids & Appliances were provided at the home with the participation of their Parents, Siblings and other Family Members. *The team took all possible measures to protect the beneficiaries (including self) from the unexpected and unhealthy challenges / environment emerged due to COVID 19. In addition to the regular training and rehabilitation, SRC has extended the support of Masks, Sanitizers, Medicine, Health Care, Dry Ration, Vegetables, Cooked Food, and other needs as majority of them are affected emotionally, economically, and socially due to present pandemic and could withstand to some extent.*

In addition to the beneficiaries, the team has also trained Parents, Siblings and other Family Members and guided them to take care of their children on day to day basis (in the absence of team). This is an innovative Project as it is expected that inclusion of CWIDDs will be more effective at Home and Community (as expected by UNCRPD 2006 & RPWD Act 2016) as the whole processes of Training and Rehabilitation will be utilizing the local resources to the maximum extent possible as a strategy within the community development with better participation, access, equality, equity, dignity, and respect as a right like their counterparts in the same community. *All*

SIRISHA REHABILITATION CENTRE (SRC)

ANNUAL REPORT FOR THE YEAR: 2020 - 2021

initiatives of this Centre are need based, simple, visible, evidence based, and sustainable with improved quality in general and particularly during the environmental emergencies emerged due to the present COVID 19.

This Home Based Project is partly supported by Asha for Education (Chapter: Kansas City) and Organization is managing other part from its internal resources. *During the year, SRC has spent more resources due to the challenges of the present pandemic and need to continue as these challenges are expected to continue in the next year.* In view of this situation, SRC needs more supports from Asha for Education for continuing this Project and additional supports to develop more such Centers matching to the dynamics of the unreached CWIDDs who need to be reached for better living within the same home & community environment suitable for capacity building and inclusion with better sustainability.

- 5) **Sirisha Community Based Rehabilitation (SCBR) Centre:** With priority and tuning to the provisions and rights of UNCRPD 2006 and RPWD Act 2016 [which insists for inclusion with priority for the model of Community based Rehabilitation (CBR)], SRC has continued this Project on its own with internal resources. During the year, **100** (Male: 45 + Female 55 who have not joined for the Institutional Services for various reasons) Persons with Intellectual & Developmental Disabilities (covering all disabilities) living in **11** villages of two mandals of Vuyyuru and Pamidimukkala have got the benefit of services, supports, referrals, and facilitation suiting to their challenges, skills, needs and living circumstances.

In view of the challenges and vulnerabilities emerged due to the present pandemic, SRC has taken care to protect the beneficiaries as well as the team while providing the regular services of training and rehabilitation. In addition to the regular services and supports, some of them have got the benefit of Masks, Medicine, Health Care, Dry Ration, Cooked Food, and other supports as everyone (including their family members) got affected emotionally, economically and socially with poor quality of life (QOL).

As insisted in Disability Acts & Policies (both National & International level), there is a need to continue this CBR model of rehabilitation for PWIDDs and other targeted groups. To continue this project, Organization is finding difficulty and looking

SIRISHA REHABILITATION CENTRE (SRC)

ANNUAL REPORT FOR THE YEAR: 2020 - 2021

forward for getting regular support from funding departments / agencies so that more number of such CBR Centers can be established within the communities covering parts of other mandals of Krishna District.

This further supports to move forward for reaching more such groups both quantitatively and qualitatively with need based strategies & interventions with innovation & creativity and thus to be part of the mission of reaching All with equality and dignity as a right so that the impact of disability can be minimized and thus achieving improved growth and development.

- 6) **Sirisha Elders' Care Centre (SECC):** Elders are the most affected and vulnerable group all over the globe and more serious in rural villages in general and particularly in view of the environmental emergencies like COVID 19. In view of the challenges, vulnerability and dynamics of Elders (60+ years - self and family), SRC has initiated this Centre in April 2019 and during the year 2020 – 2021 with the capacity of **25** members (Male 10 + Female 15). It is home based cum day care respite care (on regular interval mainly for medical care) of Elders living in Veerankilock Village of Pamidimukkala Mandal of Krishan District, Andhra Pradesh.

The services provided to the Elders includes: Cooked Food (packed in a container) on daily basis at their Home, two pairs of Cloths, Medical Treatment, supply of Medicine, Referral Services and other need based services matching to the individual's need and demand.

In addition to such regular services and supports, all the elders have got the support of Masks, Sanitizers, Medicine, Health Care, and other supports & services to get protected from the present pandemic as they are the most vulnerable group. Based on this experience and expectations from the Elders, Organization is planning to start residential based “Elders Care cum Rehabilitation Home” in Veerankilock Villages itself.

In spite of the challenges, limitations, and vulnerabilities emerged due to the present pandemic of COVID 19, SRC has put its best efforts with innovation and creativity including the use of “e tools of digital environment” (with better reach, connectivity, relationship, participation, communication, learning, sharing, reporting, and documentation) to sustain the

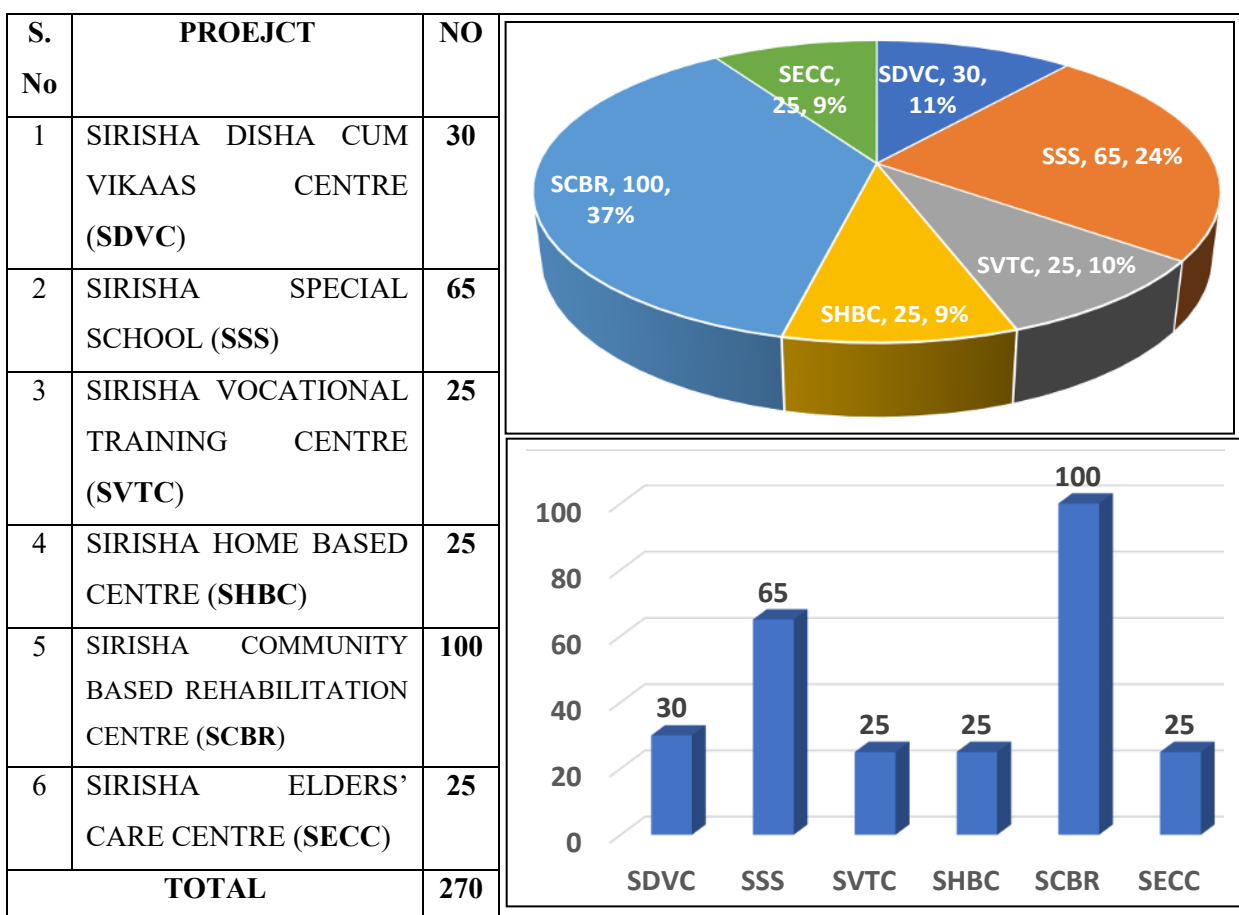
SIRISHA REHABILITATION CENTRE (SRC)

ANNUAL REPORT FOR THE YEAR: 2020 - 2021

service delivery systems (SDSs). This is possible for SRC as it is in this service journey for the last 17 years (2004 – 2021) with resources and capacities.

Through these six Projects and other initiatives / programmes, Organization has reached the targeted groups (CWIDDs / PWIDDs, & Elders) during the year 2020 - 2021 and were presented in both Tabular form and Graphical view and are shown below as:

REACH TO THE TARGETED GROUPS (CWIDDs / PWIDDs, & ELDERS): 2020 – 2021



8. PROGRAMMES / ACTIVITIES / CELEBRATIONS / NATIONAL EVENTS:

SRC has shown keen interest for the active and effective participation of Parents, Siblings, Family Members, Community Members, Health Workers, Teachers (working both in

Page 17

.....SRC works with wide Service Spectrum from Identification to Empowerment of Persons with Intellectual & Developmental Disabilities for Inclusion as a RIGHT with better Access, Participation, Sustainability & Quality of Life (QOL).....

SIRISHA REHABILITATION CENTRE (SRC)

ANNUAL REPORT FOR THE YEAR: 2020 - 2021

Government and Private Schools)) & other Stakeholders, and organized various activities / programmes under various Projects as listed above.

In view of the challenges and limitations of the present pandemic, the Programmes / Activities / Celebration / National Events conducted during the year 2020 – 2021 (the cost of these activities has been built within the cost of Projects) are mostly confined to Institute, Home, & Community (with limited participation) following the guidelines issued by the Government from time to time include:

- a) **Parents' Meets & Community Meets:** Parents and Community do play a key role in the whole process of Training & Rehabilitation of Disability Population including Prevention of the causes of Disabilities & Barrier Free Environment, Organization has organized several Meets for Parents, Siblings, Grandparents, Community Members, Anganwadi Workers, Teachers of Normal Schools, and others during the year mostly two to four times in a month at Home & Community and the areas & topics covered include:
- ✓ Awareness on Safety, and Protection measures of COVID 19.
 - ✓ Awareness on Disabilities, Causes, Consequences, Identification, Training & Rehabilitation.
 - ✓ Counseling, Advocacy and Orientation.
 - ✓ Development of ADLs & Self Help Skills with better Mobility & Access.
 - ✓ Guidance in respect of Children's stay at home and community and plans to move forward with better participation.
 - ✓ Demo on identification of behavior and its modification.
 - ✓ Awareness on Early Identification & Interventions with focus on Integrated Child Development Scheme (ICDS).
 - ✓ Issues with Communication and Speech Therapy.
 - ✓ Education, particularly Special Education and support of National Institute of Open Schooling (NIOS).
 - ✓ Niramaya Health Scheme of the National Trust, Government of India, New Delhi and its guidelines, enrollment and utilization.
 - ✓ Domestic Skills and working in the Home Environment.
 - ✓ Role of Parents & Siblings in Disability Rehabilitation & Prevention of the Causes of the Disabilities.
 - ✓ Disability Acts, Policies, Schemes & Benefits.

SIRISHA REHABILITATION CENTRE (SRC)

ANNUAL REPORT FOR THE YEAR: 2020 - 2021

- ✓ Pre-Vocational skills.
- ✓ Sports and Games with reference to Special Olympics.
- ✓ Leisure, Cultural and Recreational Activities.
- ✓ Causes of disabilities and measures for the Prevention of Disabilities (as Disability Free Society - DFS).
- ✓ Vocational Training, Skill Development and Livelihoods.
- ✓ Self Help Groups (SHGs) and Income Generation Activities.
- ✓ Educating Parents regarding Care to be taken in summer both for the health and learning.
- ✓ Role of Parents in Disha, Vikaas, Niramaya and other Schemes & Benefits of the National Trust.
- ✓ Employment, Self Employment, and Microentrepreneurship.
- ✓ Need of developing Sheltered or Protected Workshops.
- ✓ Need of Legal Guardianship and Legal Security.
- ✓ Accessible Environments (as Barrier Free Environment – BFE or Accessible Environment) with better Mobility and Spaces.
- ✓ Guidance and solution for answering the concern of the Parents that “**what will happen to the child after us?**”
- ✓ Monthly / Half Yearly / Annual Meet with Feedback and Suggestions.

b) Celebrations / National Events:

- ☞ *2nd April 2020: World Autism Day.*
- ☞ *15th August 2020: Independence Day.*
- ☞ *5th September 2020: Teachers Day.*
- ☞ *1st October 2020: International Day of Older Persons.*
- ☞ *2nd October 2020: Gandhi Jayanthi.*
- ☞ *6th October 2020: World Cerebral Palsy Day.*
- ☞ *10th October 2020: National Mental Retardation Day.*
- ☞ *14th November 2020: Children's Day.*
- ☞ *3rd December 2020: International Day of Persons with Disabilities.*
- ☞ *26th January 2021: Republic Day.*
- ☞ *11th February 2021: SRC Annual Day.*
- ☞ *8th March 2021: International Women's Day.*
- ☞ *21st March 2021: World Down Syndrome Day.*

SIRISHA REHABILITATION CENTRE (SRC)

ANNUAL REPORT FOR THE YEAR: 2020 - 2021

- c) **Distribution of Dry Ration during COVID 19:** In view of the challenges of the present pandemic, identified **220** poor families (family head having the age of 60+ years) covering seven (7) villages of two (2) mandals namely Pamidimukkala and Vuyyuru of Krishna District, Andhra Pradesh. Dry Ration packet consisting of: Rice (7Kgs.), Oil (1Kg.), Dal (1Kg.), Atta – Wheat Flour (1Kg.), Onions (1Kg.), Sugar (1kg.), Salt (1Kg.), Eggs (12 Nos.), and Vegetables (three varieties each ½ Kg.) has been distributed for the identified 220 families at their home itself. This is one time support distributed during 17th to 20th May 2020. The team took all the safety precautions to get protected from COVID 19 both for self and beneficiaries. This is the need based support as all the identified beneficiaries are the most affected both economically and socially with poor quality of life (QOL). The beneficiaries are very much happy to receive such support in the most difficult period.

This programme has been supported majorly by Asha for Education (Kansas City Chapter) and gap (includes the dry ration and transport cost of the team) has been filled with the local donations raised by SRC. It reflects the capacities of SRC and way to work with funding agency on partnership basis so that together can reach the targeted beneficiaries with matching supports on need based mode.

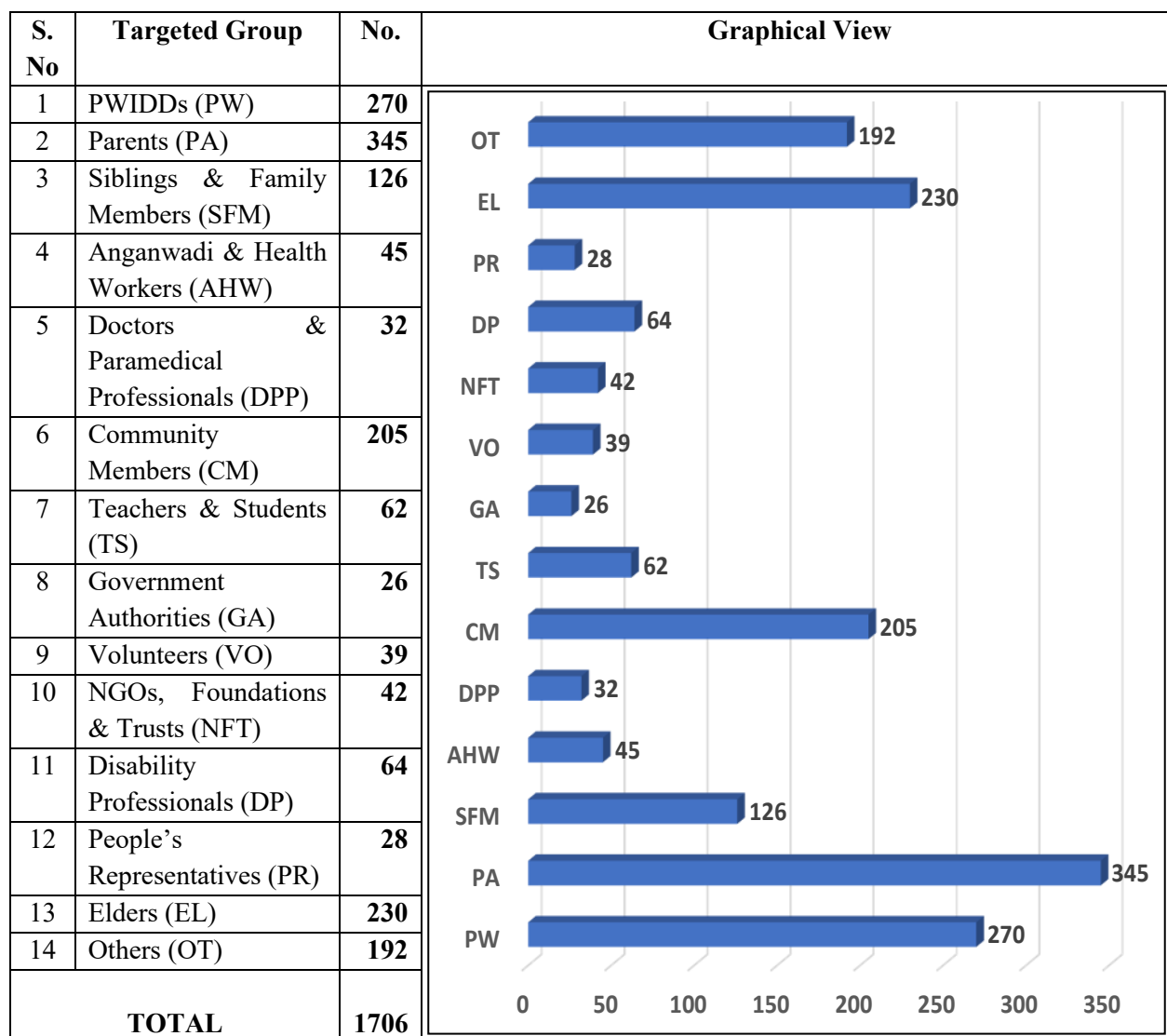
- d) **Distribution of Cooked Food during COVID:** During the present pandemic period, many Elders (60+ years) are not in a position to cook their meal. Understanding this vulnerability of Elder (including family, mostly partner), the team of SRC has done the survey and selected **30** beneficiaries from two villages i.e., Vuyyuru and Pamidimukkala of Krishna District, Andhra Pradesh. On daily basis, cooked food (as a packed container) has been served to all the identified 30 Elders for **62** days (from 15th July to 15th September 2020) at their home itself. The packed food in each carrier contains: Rice, Dal, Vegetable Curry, Sambar, Pickle, & Curd. In addition, on festival & selected day, Egg, Fruit and Sweet are added. Such supply of cooked food has given a relief to all the beneficiaries as they could not do the same due to poverty, age, barriers, challenges of COVID 19 and other consequences of social and economic circumstances. They expressed their desire to get such services and supports on residential mode like having an “*Elder Care cum Rehabilitation Home*” for happy and healthy living including last rites.

This programme has been majorly supported by Asha for Education (Kansas City Chapter) and SRC has contributed the gap and transport facility for the team. SRC is in the process of converting this in to a regular project initially on home based model.

SIRISHA REHABILITATION CENTRE (SRC)

ANNUAL REPORT FOR THE YEAR: 2020 - 2021

Reach to the Targeted Groups & Other Stakeholders: Withstanding the challenges and vulnerabilities of the present pandemic emerged due to COVID 19, SRC could develop matching service delivery systems with various Strategies, Projects, Interventions, Trainings, Programmes, Celebrations, and other need based activities. SRC has put its best effort with innovation and creativity to reach the targeted groups as well as other stakeholders. The teams took maximum care to get protected and to put all the targeted groups with better safety & protective measures and the details of the same for the year 2020 - 2021 were presented (tabular & graphical mode) below as:



SIRISHA REHABILITATION CENTRE (SRC)

ANNUAL REPORT FOR THE YEAR: 2020 - 2021

9. VISITORS:

In view of the present pandemic COVID 19 and limitations (due to the guidelines of Government from time to time), SRC has created several opportunities for various Stakeholders (Government, Private, Industries, Donors, Well Wishers, and others) to visit the Projects (mostly at Home & Community) and to be part of this noble service journey at Instituter, Project and Community. Some of the key Visitors who spared their time to bless the children during the year include:

- Sri. **V Satyanarayana**, Ex-Chairman, AMC, Vuyyuru, Krishna Dist., A. P.
- Sri. **K. Venkata Sivaiah**, Tahsildar, Pamidimukkala & Vuyyuru, Krishna Dist., A. P.
- Sri. **P. Murali Krishna**, Branch Manager, SBI, Vuyyuru, Krishna Dist., A. P.
- Sri. **K. Sivarami Reddy**, Commissioner, Vuyyuru Municipal Office, Vuyyuru, Krishna Dist., A. P.
- Sri. **P. Kalee Prasad**, Assistant Engineer, Doordarshan, Vijayawada. A. P.
- Sri. **M. Veerabhadra Reddy**, District Governor, Rotary Club, Krishna Dist., A. P.
- Sri. **P. Srinivasa Rao**, President, Rotary Club, Vuyyuru, Krishna Dist., A. P.
- Sri. **K. Gangadhara Rao**, Chairman, Ayyapa Swamy Temple, Bypass Road, Vuyyuru, Krishna Dist., A. P.
- Smt. **N. Sudharani**, President, Inner-Wheel Club, Vuyyuru, Krishna Dist., A. P.
- Smt. **Dr. Amareswari**, Eye Specialist, Eye Hospital, Rotary Club, Vuyyuru, Krishna Dist., A. P.
- Smt. **M. Lakshmi** & Smt. **Jaya Sree**, Asst. Professors, AG & SG College, Vuyyuru, Krishna Dist., A. P.
- Team from **Helping Hands Charitable Trust**, Krishna Dist., A. P.
- Team from **Rotary Club**, Vuyyuru, Krishna Dist., A. P.
- Team from **Lions Club**, Vuyyuru, Krishna Dist., A. P.

10. MOBILIZATION OF RESOURCES:

SRC, with its concern, commitment, service delivery, experience & expertise, and targeted groups served has got the support from Government [Project 2: Special School (partly) from MSJ & E, New Delhi, Project 1: Disha cum Vikaas (partly) from the National Trust, New Delhi], and Foreign Funding Agency [Project 5: Home Based Centre (partly) from Asha for Education, USA]. The other two Projects [Project 3: Community Based Rehabilitation Centre and Project 4: Vocational Training Centre] were run on its own with internal resources. In

Page 22

.....SRC works with wide Service Spectrum from Identification to Empowerment of Persons with Intellectual & Developmental Disabilities for Inclusion as a RIGHT with better Access, Participation, Sustainability & Quality of Life (QOL).....

SIRISHA REHABILITATION CENTRE (SRC)

ANNUAL REPORT FOR THE YEAR: 2020 - 2021

addition, Asha for Education, USA, has supported for two programmes i. e., distribution of Dry Ration and Cooked Food which are conceptualized, developed and implemented specially in view of the challenges and vulnerabilities emerged due to COVID 19. There exists wide gap between the Income and Expenditure which has been reflected as a weak balance sheet in its Audit Reports.

In view of the present pandemic situation, Resource Mobilization for running the Projects (both supported by external source and internal) are not regular and do alarms the Organization and puts limitations in reaching the unreached with matching services, and supports as a solution. In such situations, SRC has mobilized Resources from others including: Members of the Management Committee of the Society; Industries / Corporate (CSR); Financial Institutions, Service Organizations, Individual Donors; Local Establishments; Foundations & Trusts; Sale of Vocational Products and other Seasonal Items; Sponsorships – for furniture, teaching aids, school kits, school uniforms, food from various sources like: Rotary, Lions, Youth, other Clubs, individuals, and other philanthropists. There exists a gap with weak financial statement as the targeted groups served by SRC are poor and vulnerable both socially and economically and are in a position to contribute. In spite of this tough situation, still SRC is committed to move forward to reach the unreached both quantitatively and qualitatively with wider service spectrum.

Knowing the situation, SRC is in the process of getting supports from Foreign Funding Agencies and Industries / Corporate (under Corporate Social Responsibility - CSR) for Individual Items, Projects, and to create Corpus Fund for better sustainability of the Services & Supports to its targeted groups. SRC is putting its best efforts and looking forward to get better supports with better continuity, sharing, dissemination, and sustainability. This further supports the targeted groups to get empowered for an independent living in an accessible and inclusive community with improved wellbeing or quality of life (QOL).

11. BENEFITS, IMPACT OF SERVICES, CREDENTIALS & AWARDS:

In its Service Journey of 17 years (2004 - 2021), SRC has provided need based services & supports along with training & rehabilitation to its targeted groups who are affected and vulnerable groups. All such initiatives with innovation and creativity (both in design and implementation including monitoring & evaluation from time to time) have resulted for several benefits to the targeted groups and further created significant impact in their lives in general

----- **Page 23**
.....SRC works with wide Service Spectrum from Identification to Empowerment of Persons with Intellectual & Developmental Disabilities for Inclusion as a RIGHT with better Access, Participation, Sustainability & Quality of Life (QOL).....

SIRISHA REHABILITATION CENTRE (SRC)

ANNUAL REPORT FOR THE YEAR: 2020 - 2021

and particularly in view of the present pandemic of COVID 19 (complete year from April 2020 to March 2021 and expected to continue). Some of the key benefits and impacts created by the SRC (since inception) include:

- a) Awareness, services, supports and shift in mode of service delivery to overcome the challenges and vulnerabilities emerged due to the present pandemic of **COVID 19**.
- b) Better supports to the **Elders** in the form of Dry Ration and Cooked Food to withstand the limitations emerged due to unexpected and unhealthy environment of COVID 19.
- c) Improved **Awareness** in respect of the causes & consequences of **Disability**, Myths, Acts & Policies, Schemes & Benefits, Training & Rehabilitation, Service Providers, Prevention, Barriers, and other related issues.
- d) Better **connectivity** with **relationship** with the Professionals, Serviced Providers. Parents, Communities and other Stakeholders.
- e) The benefit of '**NIRAMAYA Health Scheme**' of the National Trust has been extended to most of its beneficiaries which includes: Enrollment, Utilization, Renewals and other needy facilitation.
- f) The benefit of '**Disability Certification & Pension**' from Government of Andhra Pradesh has been facilitated.
- g) Initiated the work for the Prevention of disability and thus moved towards "**Disability Free Society (DFS)**".
- h) Motivated the People and Community to move towards "**Barrier Free Environment (BFE)**" for '**Accessible Environments**'.
- i) The need and importance of "**Early Identification & Early Intervention Services**", with improved reach both quantitatively and qualitatively has been given priority.
- j) Improved the need and scope of "**Inclusion & Mainstreaming**" in the Community like their normal counterparts with Equality & Dignity.
- k) Improved the "**Mobility & Access**" for catering their needs at all levels.
- l) Disseminated the importance of "**Inclusive Education**" and role of Parents & Teachers.
- m) The need and importance of "**Pre-Vocational Activities and Vocational Training**" to improve Employment / Livelihood Opportunities has been spread among the Stakeholders.
- n) Need of **Employment** opportunities and Linkages & Networking has been strengthened.
- o) Facilitated for the Schemes & Benefits from Government as well as from other Sources / Organizations / Agencies.

SIRISHA REHABILITATION CENTRE (SRC)

ANNUAL REPORT FOR THE YEAR: 2020 - 2021

- p) Moving towards Right Based Strategies & Interventions tuning to the provisions of **UNCRPD** and **RPWD ACT 2016**.
- q) Conceived and designed to strengthen **Community Based Rehabilitation (CBR)** as it focuses more on participation, partnership, empowerment, independent living, contributory, inclusion, sustainability, quality of life, belongingness, and ownership within the community development.
- r) Focused for the “**Mainstreaming**” of the Children both at Normal School and Special School as per the Guidelines & Provisions of “**Right to Education (RTE)**”.
- s) Enhanced the Networking, Connectivity and Linkages, with the **Stakeholders** at all levels.
- t) Improved the Evidence Based Service Supports with better “**Accountability & Visibility**”.
- u) Improved Documentation with the use of “**e-technologies**” for quick dissemination and feedback.
- v) Got the recognition by way of:

- ✓ “**Spandan National Award**” of the National Trust, Ministry of Social Justice & Empowerment, Government of India, New Delhi.
- ✓ Sanction of Grant-In-Aid for the “**Special School**” from Ministry of Social Justice & Empowerment (MSJ & E), Government of India, New Delhi.
- ✓ “**Best NGO Award**”, **Best Parent Award**, & **Best Organization Award**, from the State Government of Andhra Pradesh.
- ✓ LIC Golden Jubilee Foundation by way of donating “**School Van**”.
- ✓ Got the Support from the National Trust, under MSJ & E, Government of India, New Delhi for the Development of “**DISHA**” and “**VIKAAS**” Day Care Centers which later merged as “**DISHA cum VIKAS CENTRE**”.
- ✓ Got the support from Asha for Education, USA, for the development and management of **Home Based Education** to the Children with special needs.
- ✓ Got the support from Asha for Education, USA, for **Elder’s Care** by way of distributing the Dry Ration and Cooked Food on home based model.

- w) Developed **Service Delivery Systems** to withstand the environmental challenges in general and particularly in view of COVID 19 and other such environmental emergencies or hazards & disasters from time to time.

SIRISHA REHABILITATION CENTRE (SRC)

ANNUAL REPORT FOR THE YEAR: 2020 - 2021

- x) Well tuned to shift towards **Digital Environment** for better connectivity, relationship, communication, learning, sharing, dissemination, reporting, documentation, and publication with better visibility at affordable cost.
- y) Better placed with **multisectoral** and **multidisciplinary approach** for better sustainability within the community development.
- z) Better equipped to initiate the **Life Care Centers (LCCs)** for answering the concern of Parents that “*what will happen to the child after us?*”

12. CHALLENGES & OPPORTUNITIES:

During the year, COVID 19 has affected everyone over the Globe and particularly Disability Population in general and particularly living in rural areas. COVID 19 has added its own dimension covering mental, economic and social domains. In addition, SRC has faced several challenges during its Service Journey while serving the targeted groups and able to transform them into opportunities tuning to digital environment and some of them include:

Challenges: Challenges are many and some of them include: Poor Awareness and Understanding by the Parents and Community; Non Acceptance of Disability; Delayed Identification and Intervention; Poor knowledge about Disability Acts, Policies, Schemes & Benefits; Increase in Disability Population; Several Barriers with poor Access; Stigma, Myths and Non-Cooperation & Non-Acceptance and Poor Participation; Reluctance to send their Child to Special Schools; Limitations in School Preparedness, & School Readiness; Poverty and non-affordability; Lack of Resources including Funds; Causes, Consequences, Impact of COVID 19; Additional Services & Supports in view of Pandemic COVID 19, and other associated covering individual, family and community which includes the Parent’s concern that “*what will happen to the child after us?*”.

Opportunities: Some of the opportunities include: Creation of Awareness cum Advocacy; Formation of Advocacy Groups for PWIDDs, Parents, & Community; Better IEC Materials with Causes and Consequences; Disability Acts & Policies, International Conventions, Early Identification and Early Interventions; Guidance with Counseling for Rights and further to Schemes and Benefits; Interventions for the Prevention of the causes of Disabilities as a move towards Disability Free Society (DFS); Initiatives for creating Spaces and move towards Barrier Free Environment (BFE); Improved Training with IEC Materials and Connectivity both Physically and Technologically; Facilitation for Employment, and Livelihoods both within the Institute and in the Community; Facilitation for Self Employment;

SIRISHA REHABILITATION CENTRE (SRC)

ANNUAL REPORT FOR THE YEAR: 2020 - 2021

Group Employment (SHGs); Microentrepreneurship; Development of Sheltered or Protected Workshop for regular Employment, Encouraging & Orientation of Youth for Special Education as a Professionals and initiatives to run HRD Centers; Shift towards Digital Environment for better connectivity, relationship, communication, learning, sharing, reporting, and documentation; Shift towards Community Based Rehabilitation within the Community Development with ownership; Safety and Precautionary measures to get protected from the present pandemic emerged due to COVID 19; Strengthening the process of Disaster Risk Reduction (DRR); Connect Poverty, Development & Disability; Multisectoral & Multidisciplinary Approaches; Use of E Technologies for Resources Mobilization, and Finally to answer the concern of Parents that “*what will happen to the child after us?*”.

13. FUTURE VISION:

The challenges of COVID 19 are a learning lesson and opened up several opportunities and accordingly SRC has conceptualized and developed need based Future Vision matching to the Challenges & Opportunities, and Experience & Expertise gained during its Service Journey (2004 - 2021) which includes:

- To construct additional **Buildings** with matching Infrastructure.
- To establish **Center** for Children with Cerebral Palsy and Autism.
- To develop **School** with **Inclusive Environment**.
- To improve **Vocational Training, & Skill Development Centre**.
- To strengthen **Residential Facilities**.
- To encourage & develop **Self Help Groups (SHGs)** with Production cum Marketing Facilities.
- To develop **Sheltered or Protected Workshop** for Employment on regular basis with the participation of Parents, Siblings, & others
- To establish **HRD** Centre for Disability Courses.
- To develop **Community Based Rehabilitation** Centre.
- To develop **Group Homes**, and **Life Care Centers**.
- To Facilitate for **Employment / Livelihoods / Income Generation / Microentrepreneurship**.
- To develop **Home** for **Oldaged People** including **Seniors with Disabilities**.
- To improve Access for **Water & Sanitation (WASH)**.
- To develop **Corpus Fund**.
- To develop **Resource Centre** with **Digital Environment**.

.....SRC works with wide Service Spectrum from Identification to Empowerment of Persons with Intellectual & Developmental Disabilities for Inclusion as a RIGHT with better Access, Participation, Sustainability & Quality of Life (QOL).....

SIRISHA REHABILITATION CENTRE (SRC)

ANNUAL REPORT FOR THE YEAR: 2020 - 2021

14. REQUIREMENTS & APPEAL:

SRC is running six projects during the year (2020 – 2021) and out of which, getting limited supports from the Department of Empowerment of Persons with Disabilities, under MSJ & E, Government of India for Special School (partly), National Trust for Disha cum Vikaas Centre (partly), Asha for Education for Home Based Education Centre (partly) and other Projects are managed with its internal resources (local mobilization which are not regular). In addition, SRC conducts several programmes at Institute, and Community with the sole aim of working for the inclusion of Disability Population. COVID 19 has contributed its own challenges and limitations in respect of mental, economical, and social areas. During the year, Ash for Education has additionally supported for two programmes of Distribution of Dry Ration, and Cooked Food both for Elders. In view of such circumstances, SRC is facing several limitations or problems with its weak balance sheet. In addition to these gaps, SRC has got several Projects (tuned to the objectives of various Disability Acts & Nation's Missions) under its future vision which are need based to reach the targeted groups both quantitatively and qualitatively as a model of an empowerment.

In view of the present pandemic situation, and to overcome these challenges, & circumstances and to extend services & supports to the disability population & other targeted groups, SRC needs supports from Government, Private, Corporate (CSR), Banks, Financial Institutions, Clubs, Foundations, Trusts, Institutions, Establishments, Individuals, Philanthropists, Funding Agencies both National and International, and other possible Agencies, Departments, & Sources. The supports can be extended to SRC by way of sending the Cheques, & Drafts in the favour of President of SRC or online deposit into the Accounts furnished as above (under Bank details). In addition, SRC has to mobilize more funds to develop '*Corpus Fund*' for moving towards its self sustainability and to develop a better solution to the concern of parents that "*what will happen to the child after us*".

To move forward and to get supports to minimize challenges, & vulnerabilities, and enhance opportunities & requirement of resources, SRC will be happy to share more information on its services, supports, service delivery models, outputs, outcome, impact, indicators and to receive suggestions & recommendations so that all its targeted groups will get an opportunity to live with us with improved quality of life (QOL) on the basis of equality, dignity and respect as a right. Please visit us (www.sirisharehabcentre.org) to bless the children and to see the realities and to refer such children to get need based services & supports as an

SIRISHA REHABILITATION CENTRE (SRC)

ANNUAL REPORT FOR THE YEAR: 2020 - 2021

opportunity to be part of this Noble Service Journey. SRC needs additional supports for developing Resource Centre with Digital Environment for better connectivity, communication, learning, reporting, and documentation so that the needy can access it with the use of E Technologies.

15. CIRCULATION & DISSEMINATION TO THE STAKEHOLDERS:

Matching to the demand from various Stakeholders, SRC has continued its system of circulating documents like Brochures, Pamphlets, IEC Materials, Organizational Profile, Audit Reports, and Annual Reports on various occasions organized at Institute, Communities, Exhibitions, Seminars, Workshops, Forums, E-Forums like Blogs, Face Book, WhatsApp, etc., and other such suitable platforms & avenues. The mode of circulation has been followed by both direct submission and through electronic transfer (e-mails) including exhibition at its website. In view of the challenges due to the present pandemic, shifted towards the use of e tools or technologies for better connectivity and sharing including scope for getting feedback from time to time.

For better visibility, SRC exhibits its Products & Materials (along with the abilities of Persons with Intellectual & Developmental Disabilities) and explains to the Parents, Professionals, Teachers, Community Members, and other Stakeholders so that effective dissemination can be done to the larger groups which have got twin advantages like: 1) to get suggestions as a feedback and 2) to reach the unreached targeted groups including referral services and supporters (Agencies). During the year, priority has been given for the use of digital interventions.

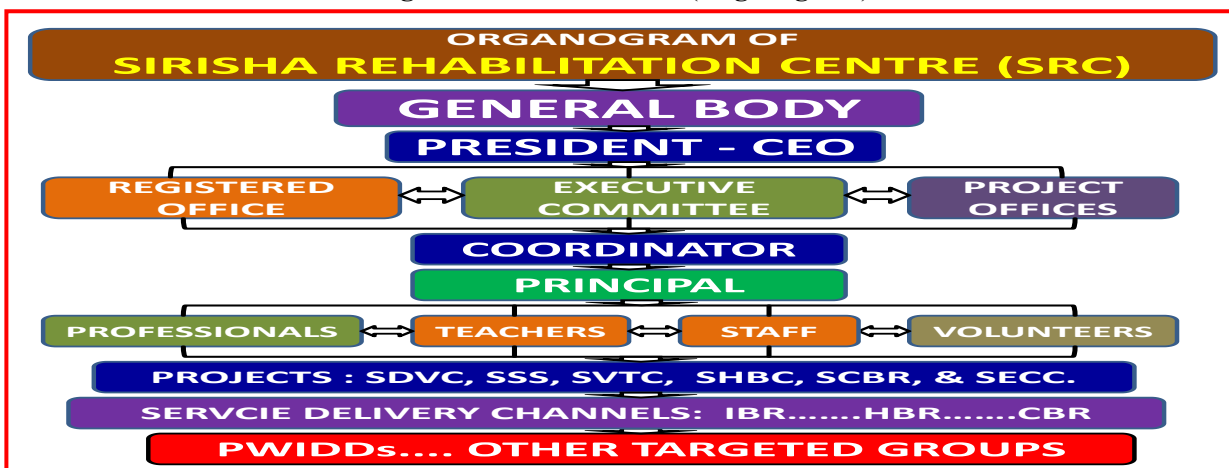
To overcome the challenges and to grab opportunities, SRC is well connected with the PWDs, Parents, Community Members, Professionals, Teachers, Youth, Volunteers, Elders, NGOs, and other Stakeholders of Disability as well as others like Government, Private, Corporate, Funding Agencies, Financial Institutes, Foundations, Trusts, & others and updating them on regular basis (with need based Strategies and Interventions with innovation & creativity) for better reach, participation, accountability, responsibility, and visibility (RPARV) with better scope for social auditing and further supporting community as part of its development plan itself.

SIRISHA REHABILITATION CENTRE (SRC)

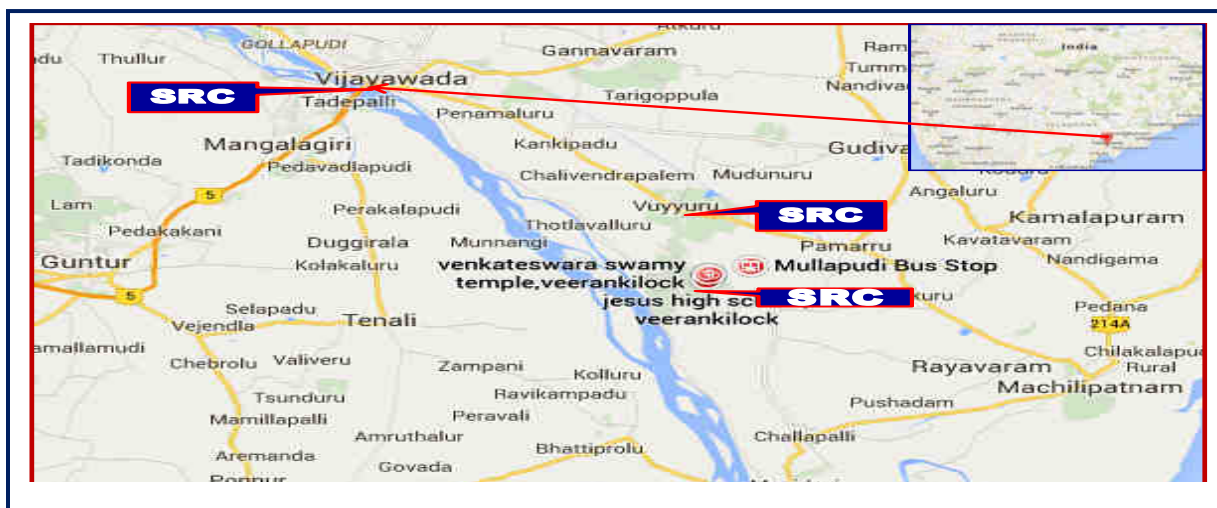
ANNUAL REPORT FOR THE YEAR: 2020 - 2021

16. ORGANIZATIONAL STRUCTURE & GEOGRAPHICAL LOCATION

Organizational Structure (Organogram):



Geographical Location:



*.....Looking forward for your continued guidance & supports
for Empowering Persons with Intellectual & Developmental Disabilities for their
Independent Living with improved Quality of Life in an Accessible & Inclusive
Community / Environments.....*

PRESIDENT
SIRISHA REHABILITATION CENTRE

.....SRC works with wide Service Spectrum from Identification to Empowerment of Persons with Intellectual & Developmental Disabilities for Inclusion as a RIGHT with better Access, Participation, Sustainability & Quality of Life (QOL).....

SIRISHA REHABILITATION CENTRE (SRC)
ANNUAL REPORT FOR THE YEAR: 2020 - 2021

PHOTO VIEW

SIRISHA REHABILITATION CENTRE (SRC)

ANNUAL REPORT FOR THE YEAR: 2020 - 2021



SIRISHA REHABILITATION CENTRE (SRC)

ANNUAL REPORT FOR THE YEAR: 2020 - 2021



SIRISHA REHABILITATION CENTRE (SRC)

ANNUAL REPORT FOR THE YEAR: 2020 - 2021



.....SRC works with wide Service Spectrum from Identification to Empowerment of Persons with Intellectual & Developmental Disabilities for Inclusion as a RIGHT with better Access, Participation, Sustainability & Quality of Life (QOL).....

SIRISHA REHABILITATION CENTRE (SRC)

ANNUAL REPORT FOR THE YEAR: 2020 - 2021



.....SRC works with wide Service Spectrum from Identification to Empowerment of Persons with Intellectual & Developmental Disabilities for Inclusion as a RIGHT with better Access, Participation, Sustainability & Quality of Life (QOL).....

SIRISHA REHABILITATION CENTRE (SRC)

ANNUAL REPORT FOR THE YEAR: 2020 - 2021



.....SRC works with wide Service Spectrum from Identification to Empowerment of Persons with Intellectual & Developmental Disabilities for Inclusion as a RIGHT with better Access, Participation, Sustainability & Quality of Life (QOL).....

SIRISHA REHABILITATION CENTRE (SRC)

ANNUAL REPORT FOR THE YEAR: 2020 - 2021



SIRISHA REHABILITATION CENTRE (SRC)

ANNUAL REPORT FOR THE YEAR: 2020 - 2021



.....SRC works with wide Service Spectrum from Identification to Empowerment of Persons with Intellectual & Developmental Disabilities for Inclusion as a RIGHT with better Access, Participation, Sustainability & Quality of Life (QOL).....

SIRISHA REHABILITATION CENTRE (SRC)
ANNUAL REPORT FOR THE YEAR: 2020 - 2021

NEWS PAPER CLIPS

.....SRC works with wide Service Spectrum from Identification to Empowerment of Persons with Intellectual & Developmental Disabilities for Inclusion as a RIGHT with better Access, Participation, Sustainability & Quality of Life (QOL).....

SIRISHA REHABILITATION CENTRE (SRC)
ANNUAL REPORT FOR THE YEAR: 2020 - 2021

AUDIT REPORT 2020 - 2021